

11/03

ENDURA

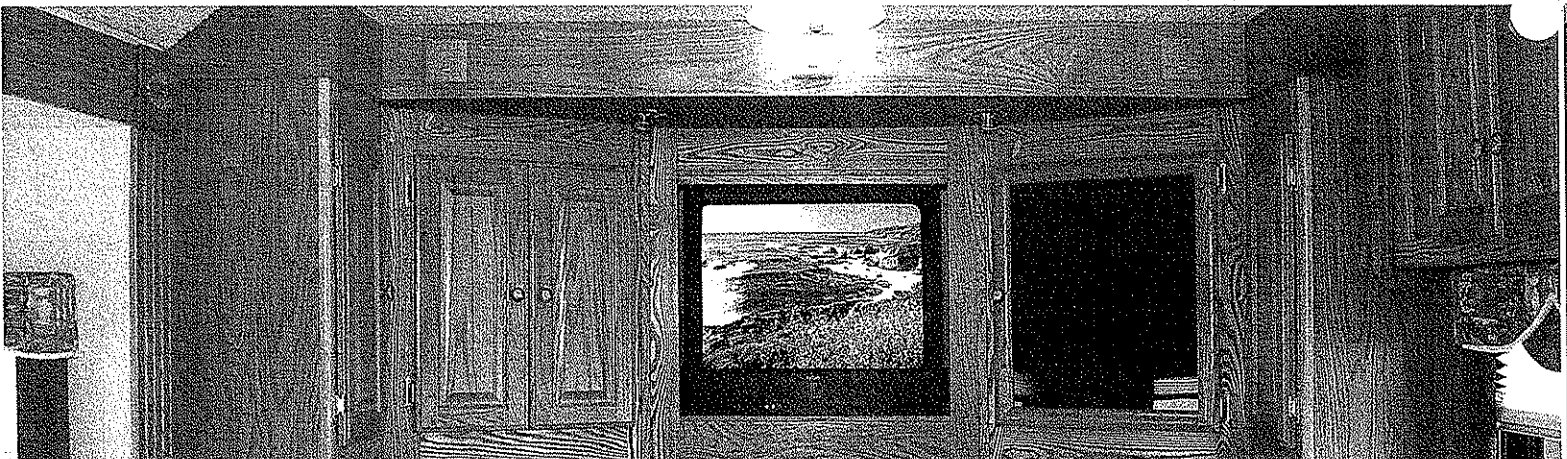
2004 MINI MOTORHOMES



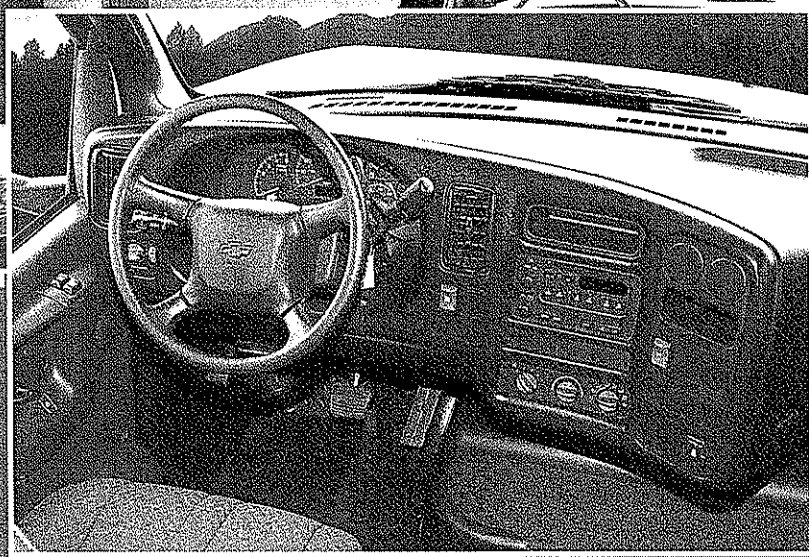
*Maximizing Storage
& living space for you and your family...*

ENDURA

Quality

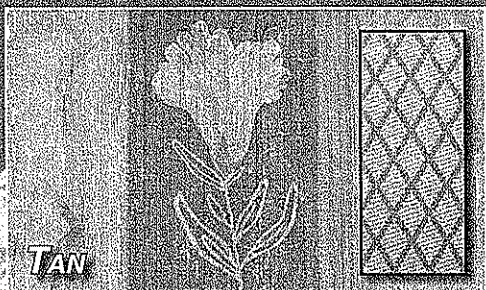


CABOVER ENTERTAINMENT CENTER AND COMFORTABLE COCKPIT • MODEL 6340

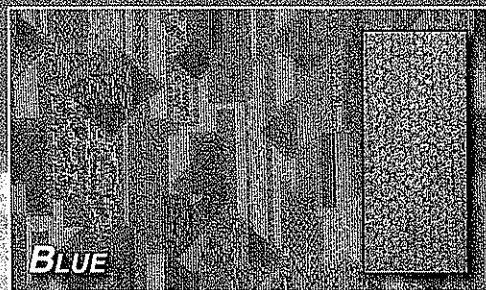


DRIVER COMFORT...

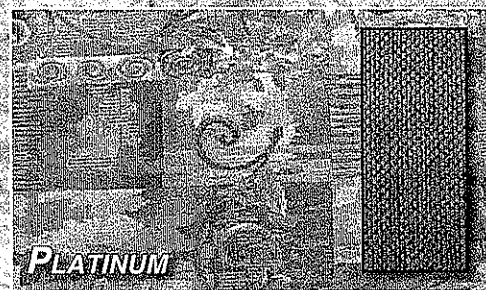
The Endura's cockpit is ergonomically designed to bring the controls to the driver's fingertips. Large easy to read gauges and comfortable seating with more legroom than any other class C will make your driving time more enjoyable.



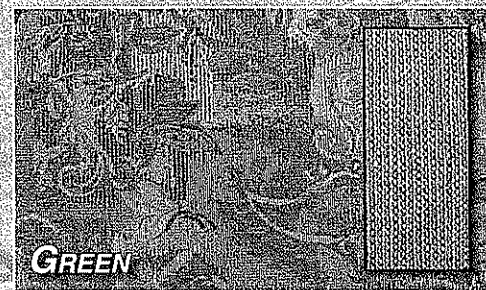
TAN



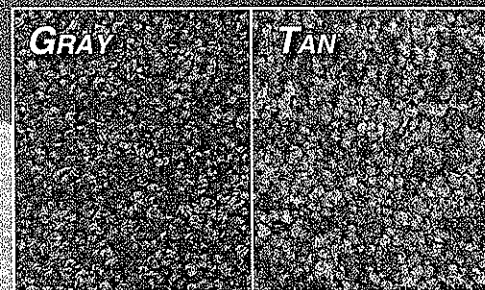
BLUE



PLATINUM

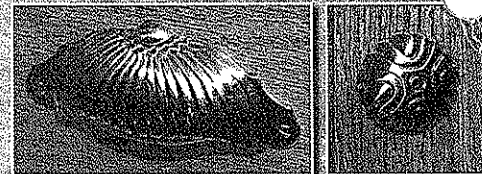


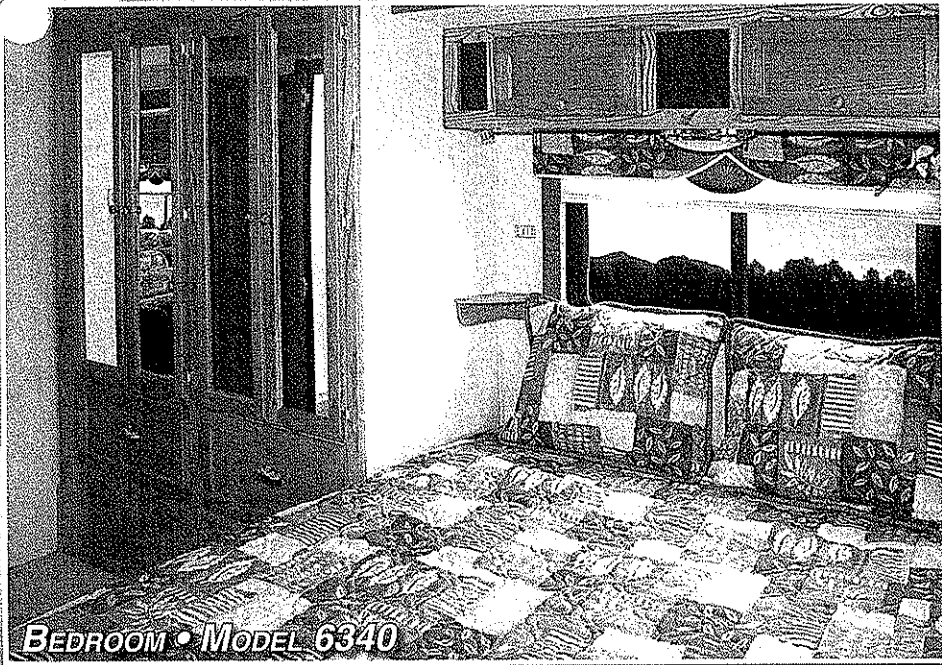
GREEN



Gray Carpet Available Tan Carpet Available with Platinum decor only Tan, Blue or Green decor

NICKEL PLATE HARDWARE

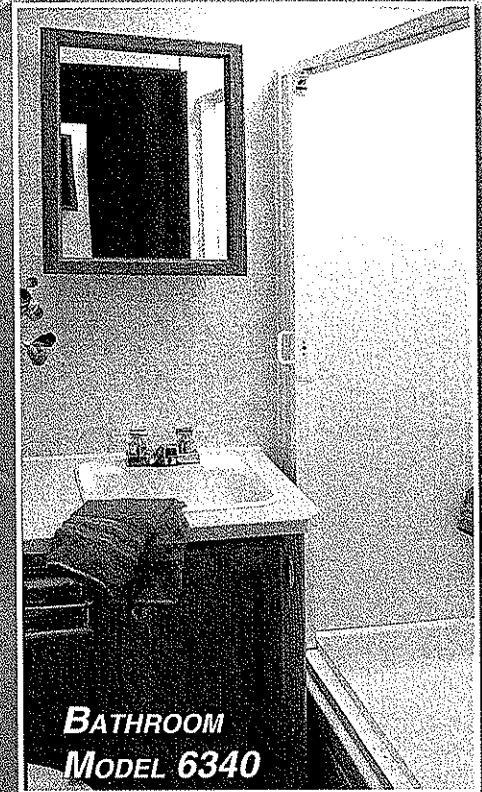




BEDROOM • MODEL 6340

BEDROOM...

His and Her wardrobes, overhead storage and Queen size bed makes this home away from home the most comfortable nights stay available in a mini-motorhome.



**BATHROOM
MODEL 6340**

BATHROOM...

Spacious bathroom design makes it easy to prepare for the day ahead.

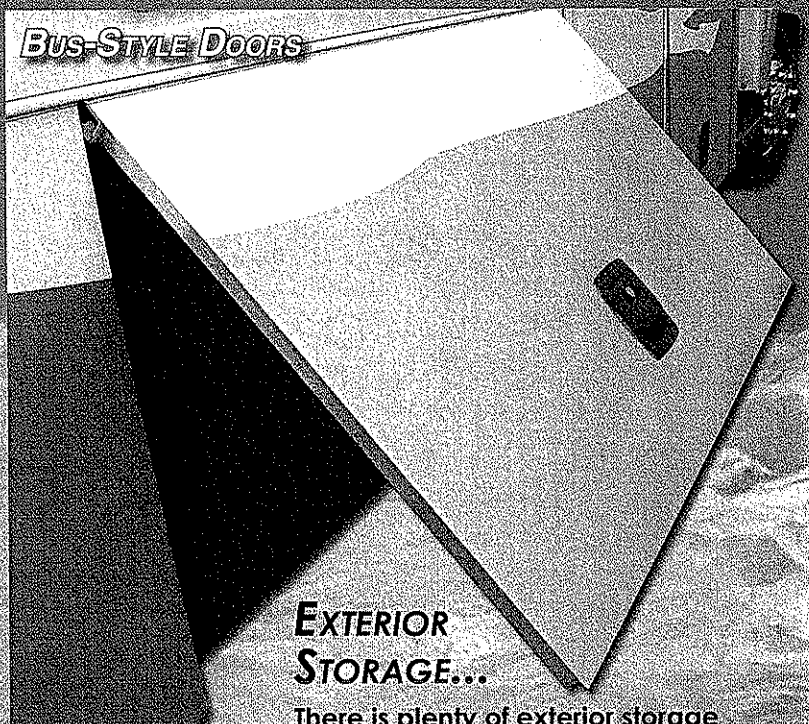
Nearly seven foot interior ceilings and skydome maximize shower headroom



GALLEY • MODEL 6340

GALLEY CONVENIENCE...

wide-open galley offers all the comforts of your kitchen at home. 3-burner high performance range; 2-door, 2-way refrigerator and large microwave oven, you will be able to prepare any of your family's favorite meals.



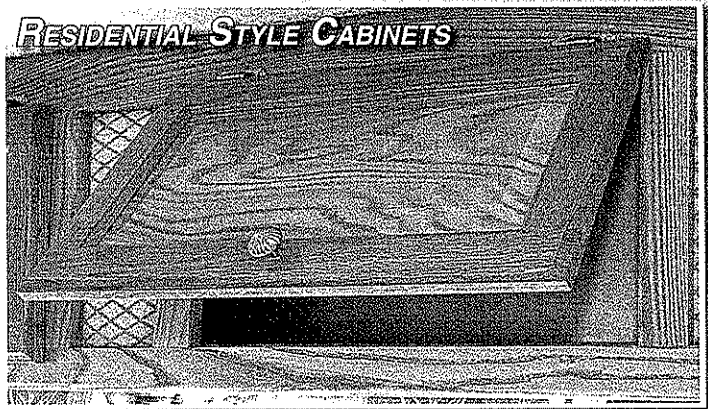
**EXTERIOR
STORAGE...**

There is plenty of exterior storage room for your travel needs.

ENDURA

Exclusive

RESIDENTIAL STYLE CABINETS



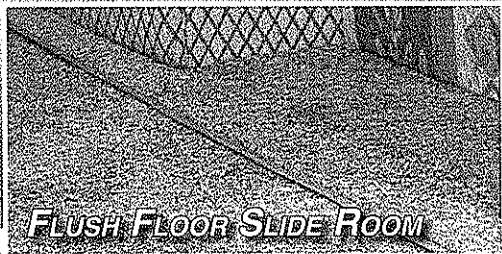
Our residential style cabinets are constructed of solid hardwood doors and fronts that are predrilled and screwed then they are stained and top coated with a furniture grade finish that provides long lasting beauty and durability as well as adding strength and quietness to your motorhome.

Other companies use wrapped cabinet fronts prone to peeling, fading and tearing. The softer composite wood used does not hold screws as well as hardwood resulting in loss of strength and squeaking. Discoloration will degrade the beauty and lower the value of the motorhome.

**PREDRILLED
HARDWOOD
CONSTRUCTION**

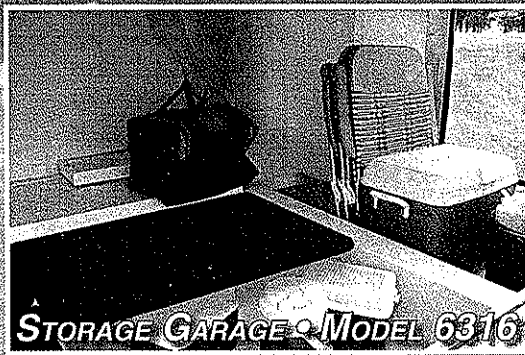


COMPETITOR'S CABINETRY



FLUSH FLOOR SLIDE ROOM

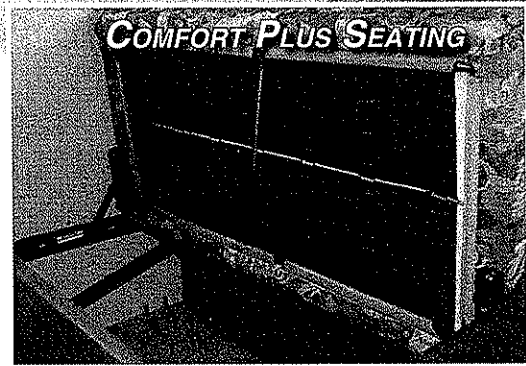
A Gulf Stream Exclusive. The first Class C with flush floor slides providing a residential look and feel with 6 foot ceilings in the slide room.



STORAGE GARAGE MODEL 6316

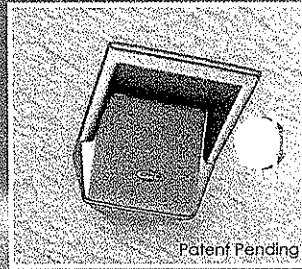
Enormous, four point access (3 exterior, 1 interior), one-piece molded fiberglass storage garage designed to maximize storage capacity and accessibility.

Unlike traditional plywood and foam seating Comfort Plus Seating features the strength of steel and the comfort of a sprung dinette cushion.



COMFORT PLUS SEATING

The Endura offers home theater surround with G-Sound exclusive ceiling inset surround speakers. Available with cabover entertainment center option only.



Patent Pending

SUPER STRENGTH TRUSS SYSTEM

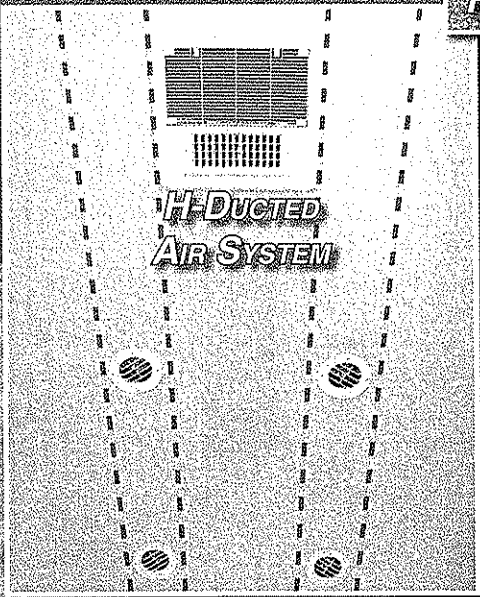


6" C CHANNEL EXTENSION

The super strength truss system is unique in the class C industry. The structural subfloor begins by welding a network of interior trusses to the chassis rail. Specifically designed to withstand the tremendous forces from the coach, each truss is individually tested to withstand 1000 lbs.

When the chassis is stretched, Gulf Stream's exclusive practice adds to the strength of the truss system that towing is safe on an extension.

H-DUCTED AIR SYSTEM

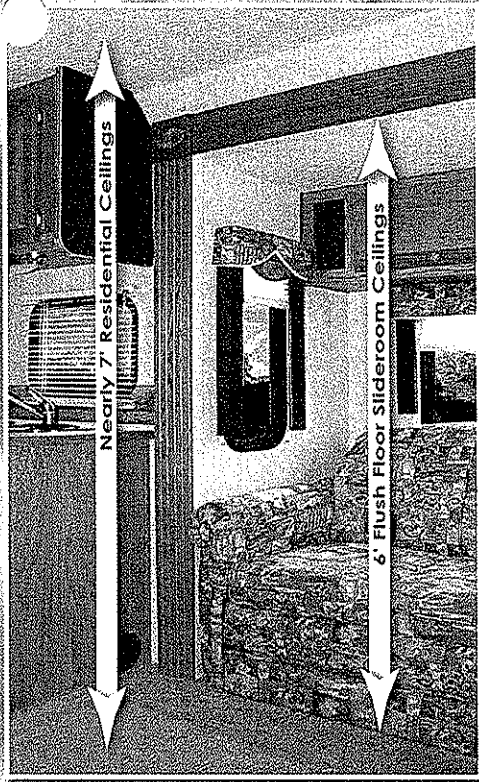


Dual metal H-Ducted air conditioning system with foil bubble wrapped insulation for improved climate control.

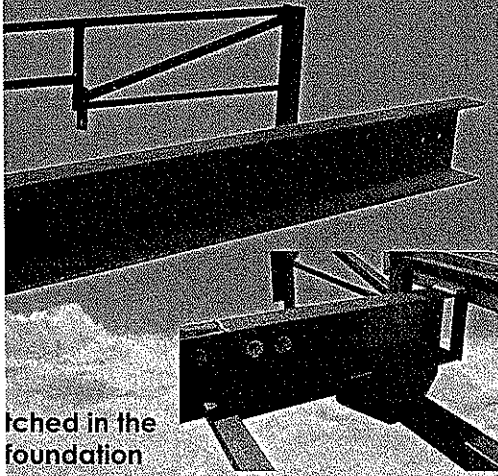
Features & Benefits



TAKE THE TIME TO COMPARE...
and you will find the exceptional value of a Gulf Stream Coach



The Gulf Stream Class C has nearly 7' interior ceilings providing a true residential look and feel with 6 foot ceilings in the slide room

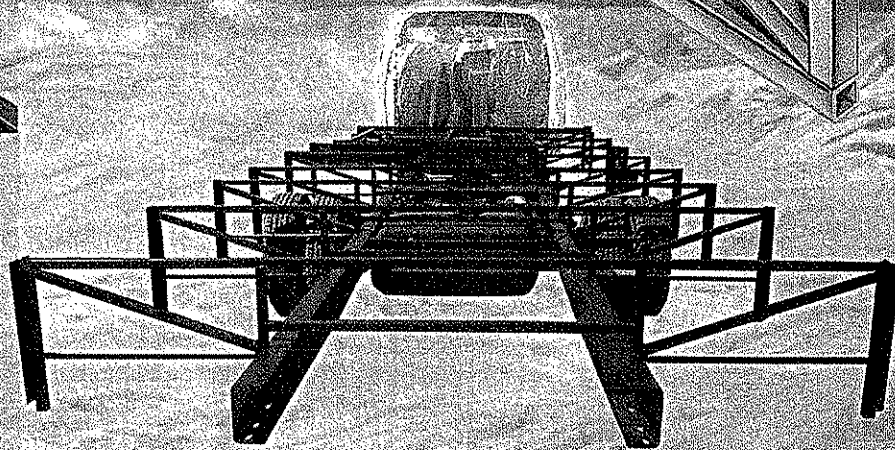
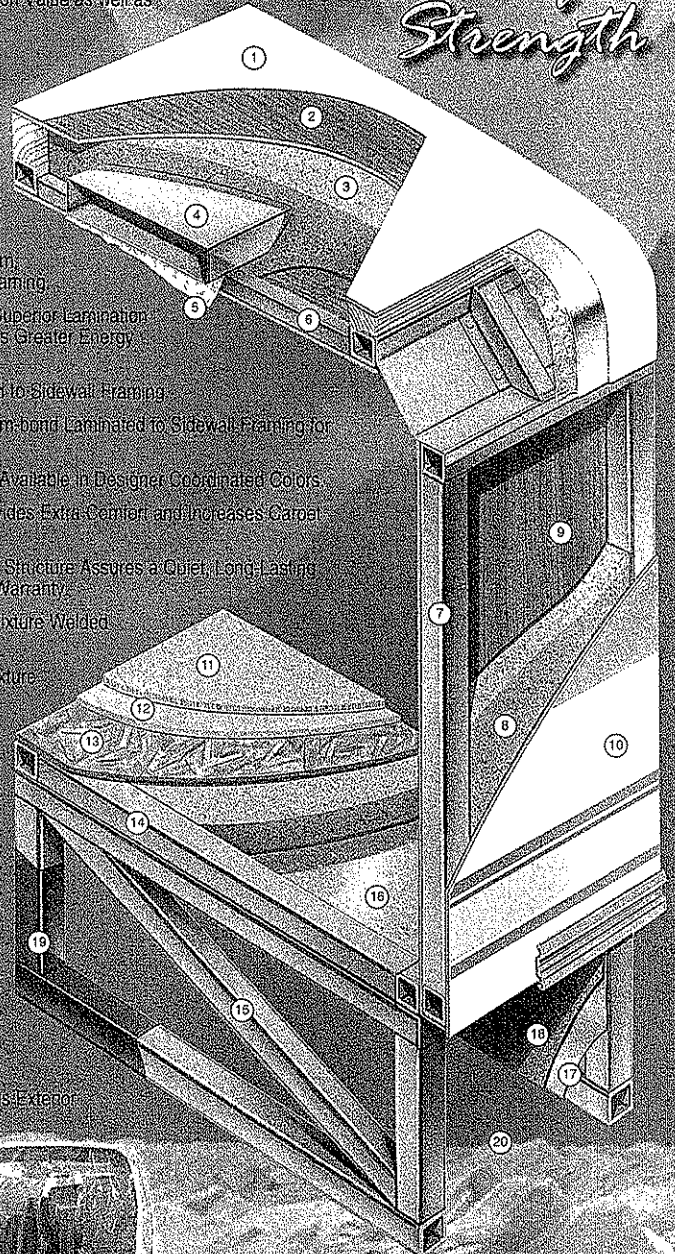


Attached in the foundation, the steel trusses are designed to distribute and transfer the load to the chassis rail these trusses are 8" x 8" each.

Our 8" x 8" steel truss stands alone in the industry versus the traditional 4" or less. This foundation and offers peace of mind is true to the chassis.

1. Seamless Fiberglass Roof For Greater Energy Efficiency and Dependability
2. Luan Decking for Additional Strength
3. Molded, High Density EPS (Expanded Polystyrene) Roof/Brick Insulation - Provides Consistent Insulation Value as well as Superior Dimensional Rigidity.
4. One-Piece Formed Aluminum Air Conditioning Duct, Completely Surrounded By EPS Insulation
5. Bubble-Wrapped Foil Insulation Provides Superior Insulation and Helps Prevent Condensation
6. Rugged Welded Tubular Aluminum Roof Framing
7. Rugged Heavy-Gauge Tubular Aluminum Fixture Welded to Form the Sidewall Framing
8. High-Density EPS Insulation Provides Superior Lamination and Bonding Characteristics and Insures Greater Energy Efficiency
9. Interior Wall Panels Securely Laminated to Sidewall Framing
10. Super-Slick Fiberglass Exterior Vacuum-bond Laminated to Sidewall Framing for Lasting Beauty and Durability
11. High-Quality Stain-Resistant Carpeting Available in Designer Coordinated Colors
12. Extra-Thick Padding Under Carpet Provides Extra Comfort and Increases Carpet Durability
13. Floor Decking Laminated to Steel Floor Structure Assures a Quiet, Long-Lasting Rigid Floor and comes with a 10-Year Warranty
14. Heavy-Gauge Tubular Steel Framing Fixture Welded for Extra Strength and Stability
15. Heavy-gauge Tubular Steel Framed Fixture Welded Floor Truss System Provides the Strongest Class C Foundation in the Industry
16. Seamless Layer of Galvanized Steel Securely Laminated to the Steel Floor Framing
17. Galvanized Steel Used to Form Each Storage & Holding Compartment
18. Durable All-Weather, Carreling Completes Each Accessible Storage Compartment, Providing Extra Protection for Luggage and Valuables
19. Rust-Prohibitive Paint Coating Applied to All Steel Framing Assures Corrosion and Rust Protection
20. The Industry's Strongest, Most Spacious Exterior Storage Compartments

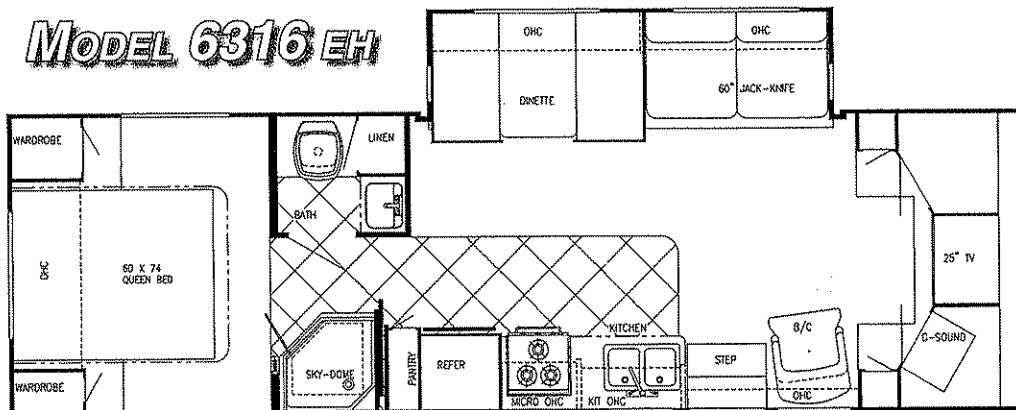
Cradle of Strength



ENDURA

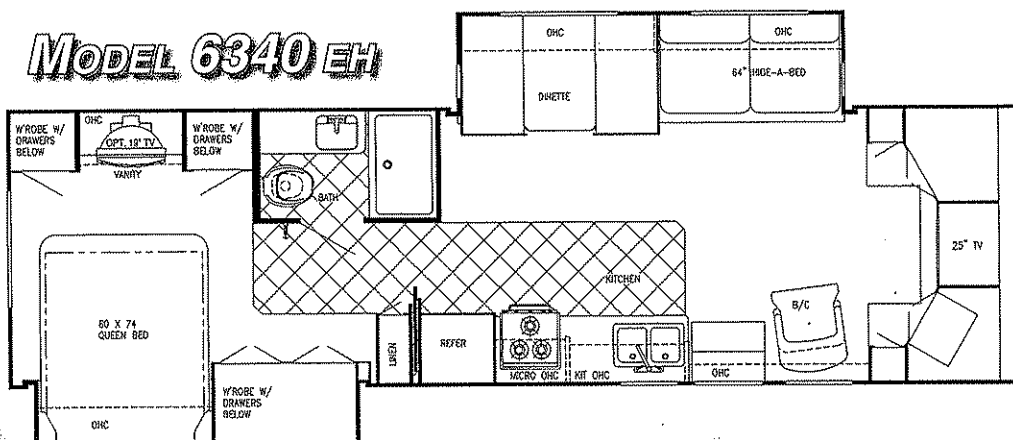
Floorplans &

MODEL 6316 EH



Chassis	Chevy Kodiak
Engine	V-8
Fuel	80
GVWR	19,500
Length	32'-11"
Height w/AC	11'-10.5"
Width	101"
Wheelbase	213.5"
Fresh	54 gal.
Grey	36 gal.
Black	36 gal.
LP Gas Tank	62 lbs.
Furnace (BTU's)	30,000
Water Heater w/DSI	6 gal.
Ext Storage	153.48

MODEL 6340 EH



Chassis	Chevy Kodiak
Engine	V-8
Fuel	80
GVWR	19,500
Length	35'-1"
Height w/AC	11'-10.5"
Width	101"
Wheelbase	239.5"
Fresh	54 gal.
Grey	36 gal.
Black	36 gal.
LP Gas Tank	62 lbs.
Furnace (BTU's)	35,000
Water Heater w/DSI	6 gal.
Ext Storage	99.52

Interior & Decor

- Nearly 7' Interior Ceiling Height
- Handcrafted Natural Hardwood Cabinet Fronts & Doors
- Cabover Entertainment Center with 25" TV
- G-Sound ceiling inset surround speakers (Available w/ cabover entertainment center option only)
- 2-way Driver & Passenger Seat
- Coordinated Bedspreads & Pillows
- Power Vent in Commode
- Mini Blinds in Kitchen
- Soft Touch Interior Ceiling Fabric
- Designer Interior Window Treatments
- Drink Tray
- Oak Knife Holder
- Entry Door Assist Handle
- Privacy Curtain Cab
- Deluxe Carpet w/Pad
- Generous Overhead Storage
- Pleated Shades
- Rubber Entry Step
- Tub Surround
- Hydraulic-Operated Flush Floor Glide Out Room

Electrical System

- Easy Store 30' Elect. Power Cord
- Lighted Basement Storage
- Double Overhead Bedroom Reading Lights
- 110 Volt Receptacles
- Generator Prep
- Ground Fault Circuit Interrupter
- Outside Receptacle
- Auxiliary Battery
- Electronic Converter w/ Charger (55 Amp)
- Monitor Panel
- TV Antenna w/ Amp & Boost
- Battery Disconnect

Appliances

- 3-Burner Range w/ Oven
- Carbon Monoxide Detector
- Over The Range Microwave
- 11,000 BTU Ducted Roof A/C (Bedroom)
- 13,500 BTU Ducted Roof A/C
- Range Cover
- 2-way Double Door Refrigerator
- 6 Gal. Elect. Ign. Water Heater

Bath & Water

- City Water Hook-Up
- Water Bypass Valve
- Glass Shower Door (6316)
- On Demand Water System
- Lavatory w/ Base Cabinet Storage
- Bath Convenience Accessories
- Skydome in Shower
- Medicine Cabinet

Chassis

- Chevy Vortec, V-8 Engine
- Chevy Kodiak C5500
- 5 Speed Allison 1000 Heavy Duty Transmission
- Tilt Wheel Steering
- Power Locks and Windows
- CD Player-AM/FM Stereo w/ 4 Speakers
- Dual Air Bags
- Cruise Control
- Power Brakes & Steering
- Radial Tires

Exterior & Construction

- Welded Aluminum Cage Construction.
- High Density Block Foam Insulated Walls, Roof & Floor
- Super-Slick Laminated Fiberglass Ext.

- Electric Step
- Exclusive Molded Roof Brick Insulation
- Radiused Laminated Fiberglass Roof w/Heliarc-Welded Aluminum Rafters, and Exclusive Molded Roof Brick Insulation w/ Bubble Wrap Duct System
- Laminated Floor w/ Metal Underbelly
- Foamed, Sealed & Undercoated Subfloor
- Pre-molded Front Fiberglass Cap
- Full, Carpeted Basement Storage
- Outside Grab Handle
- Porch Light
- Dead-Bolt on Entry Door
- Paint and Exterior Graphics
- Fully-Enclosed Water Tanks
- 4-Ply Laminated Walls, Roof & Floor
- Hydraulic Pump Slide System
- Tubular Steel Floor
- Expansive Radius Windows
- Slide-Out Room Awning

Coach-Net®

24 HR. EMERGENCY ROADSIDE ASSISTANCE

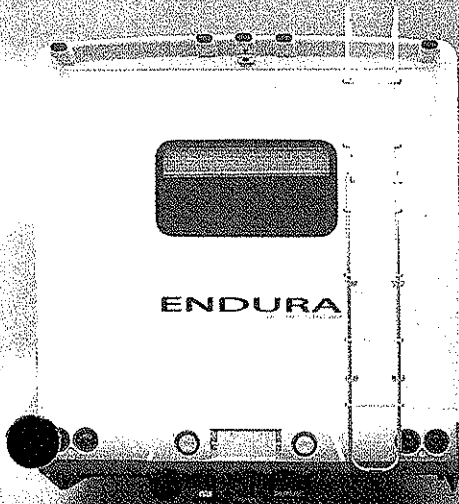
- One Year Coach-Net Membership
- Towing and Winching
- Delivery of emergency Fluids
- Flat Tire Change
- Jump-Start / Battery Boost
- Mobile Mechanic
- Lockout

Popular Options

- Outside Entertainment Center
- CabOver Bed w/SideOver 19" T.V.
- Backup Monitor
- Heated Holding Tanks
- Emergency Start
- DSS Pre-wire
- Duramax 6.6 Litre Diesel Engine
- 5.5 Onan Diesel Generator

ONE-PIECE TEXTURED FIBERGLASS ROOF FEATURES & BENEFITS...

- Excellent Weathering** - Maintaining the vehicle's quality appearance enhances its resale value.
- Tear Resistance** - Unlike rubber roofing, Flexroofs hard abuse resistant finish resists tearing, a condition that can cause leaks and lead to expensive repair.
- Low Maintenance** - Road grime can easily be removed with normal cleaning maintenance. Rubber chalking due to solar breakdown of the roof surface is eliminated, preserving the original appearance and resale value of the vehicle.
- Stain Resistance** - Fiberglass Flexroof is designed to resist staining and maintain its quality appearance.
- Structural Integrity** - Unlike conventional EPDM rubber roof membranes, Flexroof is a structural component of the roof system.
- Textured Fiberglass** - Helps dissipate heat and is slip resistant. In addition, it helps prevent tree limbs from tearing or scratching your roof.



Automotive Style Rear with Integrated Bumper

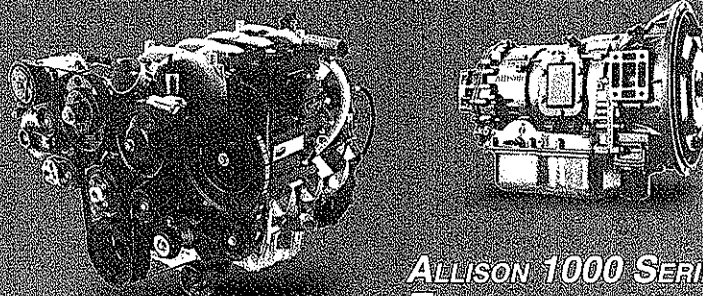


EXTERIOR FEATURES...

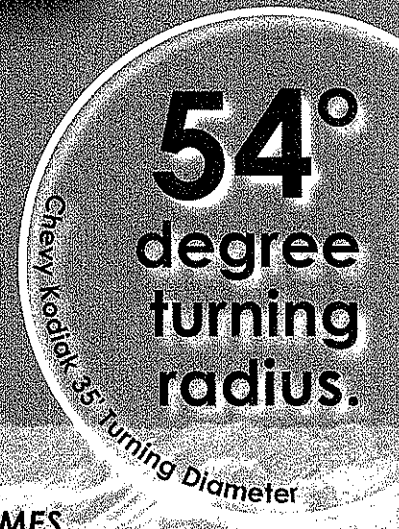
- The Endura's Exterior Features Superslick Fiberglass, One-piece Textured Fiberglass Filon™ Flexroof, Bus Style Basement Storage Doors with Heavy-Duty Slam Latches, Premolded One-piece Front Cap.

8.1 LITRE, 325 HP. VORTEC ENGINE

- GVWR... 19,500 pounds.
- Nearly one ton Cargo Carrying Capacity*
- Superior Towing Capacity 26,000 GCWR**
- Driver and Passenger Airbags



ALLISON 1000 SERIES
TRANSMISSION
5-SPEED AUTOMATIC.



54°
degree
turning
radius.

VISIBILITY SUPERIOR TO MOST MOTORHOMES

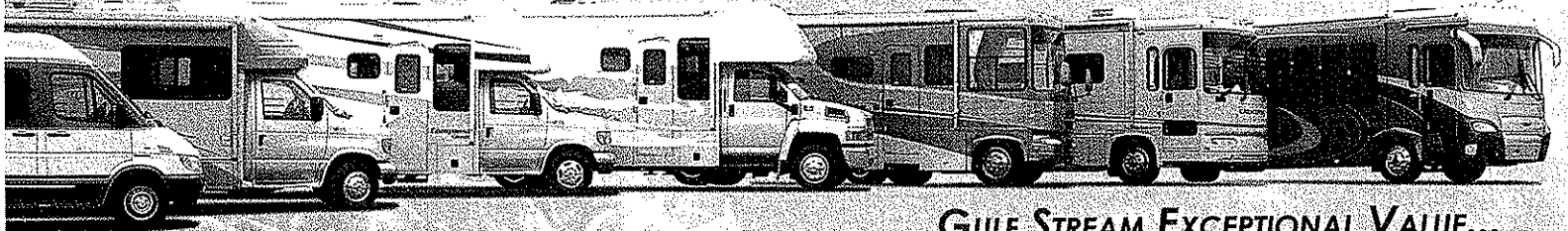
Negotiating a tricky turn in the campground? No need to worry, with a larger windshield and sloped hood this breakthrough RV delivers a field of vision as little as 13 feet from the front bumper.



* CCC (Cargo Carrying Capacity) is equal to the GVWR minus each of the following: UVW, full fresh (potable) water weight (including water heater), full LP Gas weight, and SCWR.
**Optional Equipment Necessary

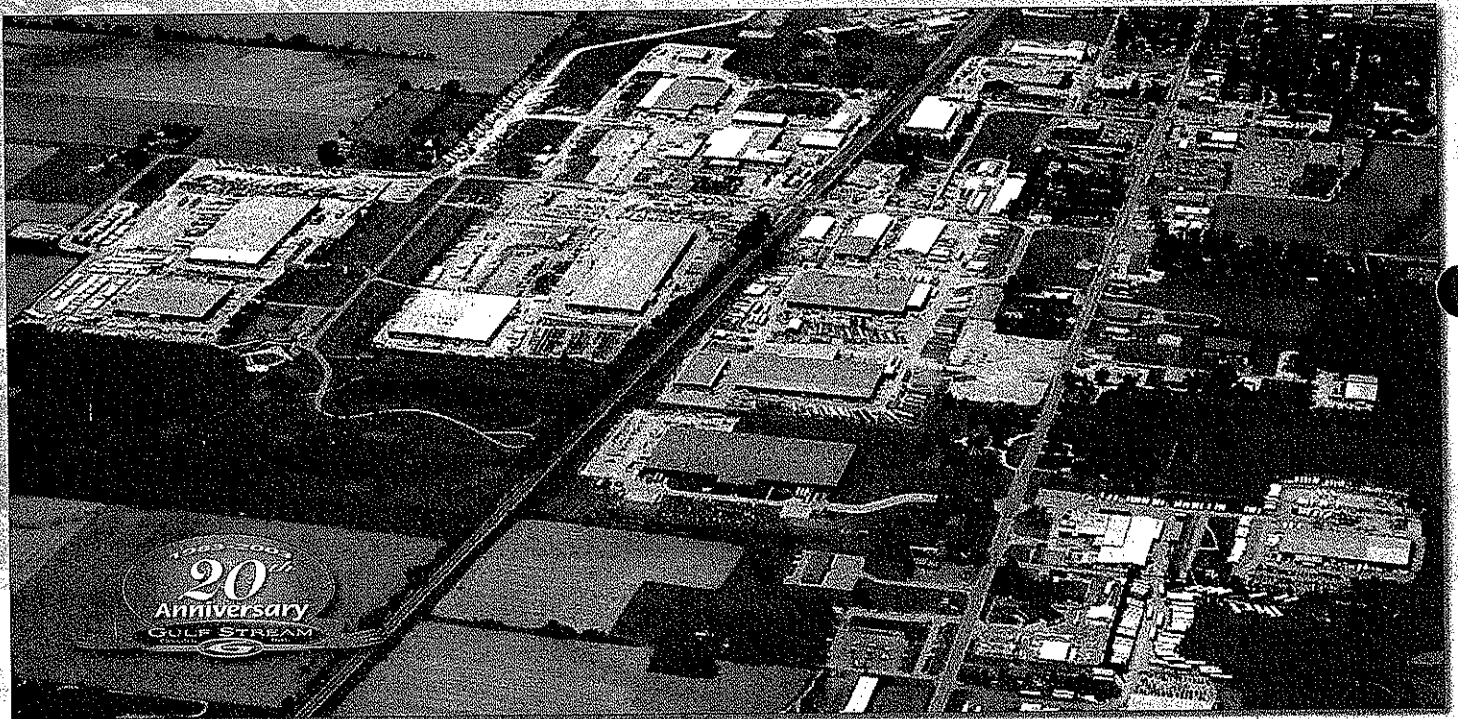


Quality, Comfort, Innovation



GULF STREAM EXCEPTIONAL VALUE...

Your family and friends will feel safe and comfortable wrapped in Gulf Stream's "Cradle of Strength". Comfort, Quietness and Insulation from the elements is what you will experience from Gulf Stream's "Tried and Tested" Motorhomes. Compare... and you will find the exceptional value of a Gulf Stream Motorhome.



GULF STREAM FACILITIES...

Located in the heart of the Amish country, the complex, along with Gulf Stream's affiliate, Fairmont Homes, Inc., covers over 400 acres and includes more than 1.5 million square feet of state-of-the-art manufacturing facilities. With over 20 years of manufacturing experience producing quality Recreational Vehicles, Gulf Stream is the leading manufacturer of high quality and high value RV products that are distributed through a partnership relation with independent dealers who are focused on meeting customer expectations.



WWW.GULFSTREAMRV.COM

**FOR MORE DETAILED INFORMATION...
OR CALL 1-800-765-8787-EXT. 3288**

For more information and available options, contact your local Gulf Stream dealer, www.gulfstreamRV.com or Gulf Stream Coach, Inc. Gulf Stream Coach, Inc., reserves the right to make changes in prices, colors, materials, components and specifications and to discontinue models at any time without notice or obligation. Gulf Stream Coach, Inc., assumes no responsibility for any error in type or print reproduction of specifications or floorplans in this brochure. Photographs may show equipment or items that are optional and are not included in the purchase price of the coach. Test drive and review a current model at your nearest Gulf Stream dealer. © 2002 Gulf Stream Coach, Inc., Nappanee, Indiana U.S.A.

11/03-SP-20k

POST OFFICE BOX 1005

• YOUR GULF STREAM COACH DEALER •

NAPPANEE, IN 46550