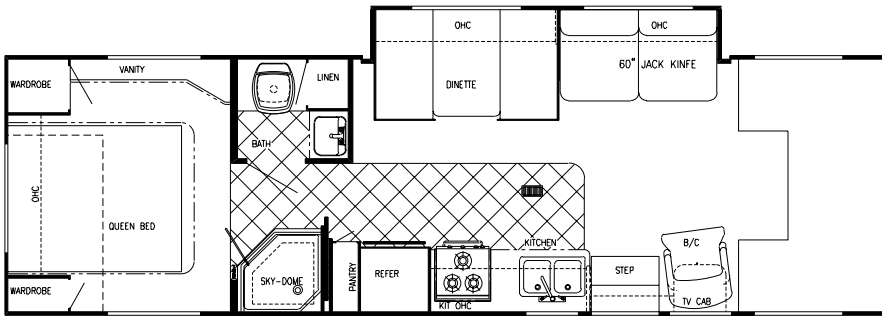




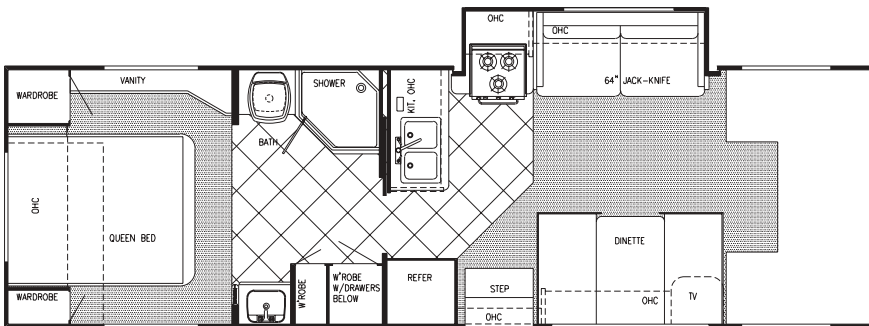
Conquest 2002

• CLASS C MOTORHOMES •



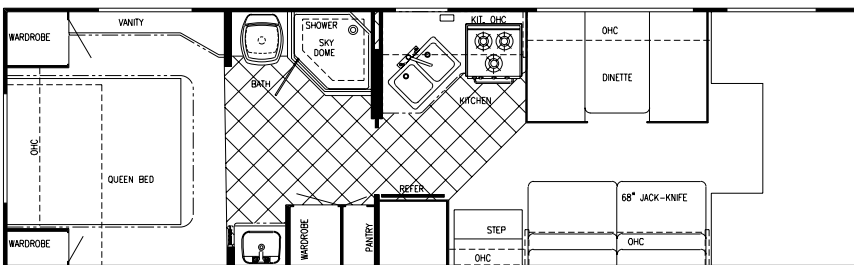
Chassis	Ford V-10
Fuel	55 gal
GVWR	14,050
Length	31'-5"
Height	11'-3"
Width	101"
Black	36 gal
Grey	36 gal
Fresh	34 gal
LP Gas Tank	62 lbs.
Furnace	30,000 BTUs
Water Heater	6 gal

Model W6316RQ (Twin Beds Opt.)



Chassis	Ford V-10
Fuel	55 gal
GVWR	14,050
Length	30'-10"
Height	11'-3"
Width	101"
Black	36 gal
Grey	36 gal
Fresh	34 gal
LP Gas Tank	62 lbs.
Furnace	30,000 BTUs
Water Heater	6 gal

Model W6304Q (Twin Beds or Bunks Opt.)



Chassis	Ford V-10
Fuel	55 gal
GVWR	14,050
Length	30'-6"
Height	11'-3"
Width	101"
Black	36 gal
Grey	36 gal
Fresh	34 gal
LP Gas Tank	62 lbs.
Furnace	30,000 BTUs
Water Heater	6 gal

• SUPREME STANDARD SPECIFICATIONS •

Interior & Decor

- 6' - 5" Interior Height
- Natural Hardwood Stile Cabinetry
- Natural Oak, Raised Panel Mortise and Tenon Cabinet Doors (in galley)
- Queen Size Bed, Cab-Over
- 2-Way Driver & Passenger Seats
- Coordinated Bedspread & Shams
- Power Vent in Commode
- Mini Blinds in Kitchen
- Soft Touch Interior Ceiling Fabric
- Designer Interior Window Treatments
- Drink Tray
- Oak Knife Holder
- Oak Entry Door Assist Handle

Electrical Systems

- Easy-Store 30' Elect. Power Cord
- Lighted Basement Storage
- Double Overhead Reading Lights
- 110V Receptacles
- Generator Prep

- Ground Fault Circuit Interrupter
- Outside Receptacle
- Auxiliary Battery
- Electronic Converter w/Charger (45 Amp)
- Monitor Panel

Exterior & Construction

- High Quality Clear Coated Paint on Skirt & Side Wall
- Welded Aluminum Cage Construction
- High Density Block Foam Insulation in the Walls, Roof & Floor
- Super-Slick Laminated Fiberglass Ext.
- Radiused Laminated Rubber Roof
- Exclusive Molded Roof Brick Insulation
- Laminated Floor w/Metal Underbelly
- Foamed, Sealed & Undercoated Subfloor
- Fiberglass Front and Rear Caps & Wings
- Full, Carpeted Basement Storage
- Front Cab-Over Window
- Outside Grab Handle
- Porch Light
- Dead-Bolt on Entry Door
- Spare Tire and Wheel
- Fully-Enclosed Water Tanks

Bath & Water

- City Water Hook-Up
- Water Bypass Valve

Appliances

- 3-Burner Range w/Oven
- Range Hood w/Monitor Panel
- Carbon Monoxide Detector
- Microwave
- 13,500 BTU Ducted Roof A/C

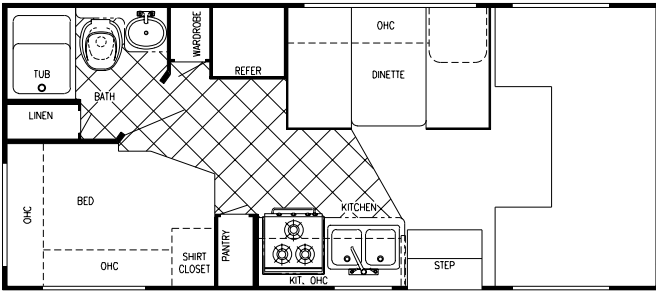
Chassis

- 6.8L, V-10 Engine
- E-40 Super Duty Chassis
- 4 Speed Auto. Overdrive Trans.
- Deluxe Heated & Remote Mirrors (Opt.)
- Power Locks and Windows
- CD Player-AM/FM Stereo w/4 Speakers
- Dual Air Bags
- Cruise Control



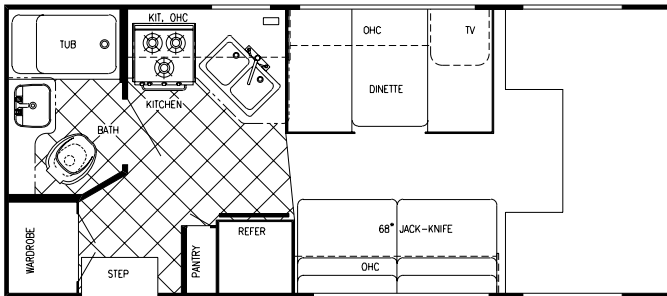
Conquest LTS 2002

• LTS FLOORPLANS •



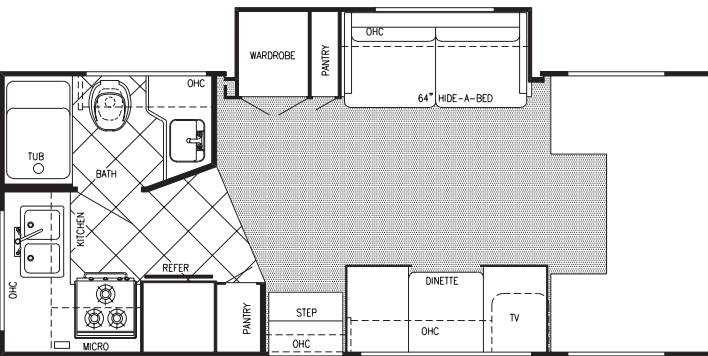
Chassis	Ford V-10
Fuel	37 gal
GVWR	10,700
Length	22'-4"
Height	11'-1"
Width	101"
Black	30 gal
Grey	30 gal
Fresh	32 gal
LP Gas Tank	62 lbs.
Furnace	25,000 BTUs
Water Heater	6 gal

Model W6210D (Sofa Opt.)

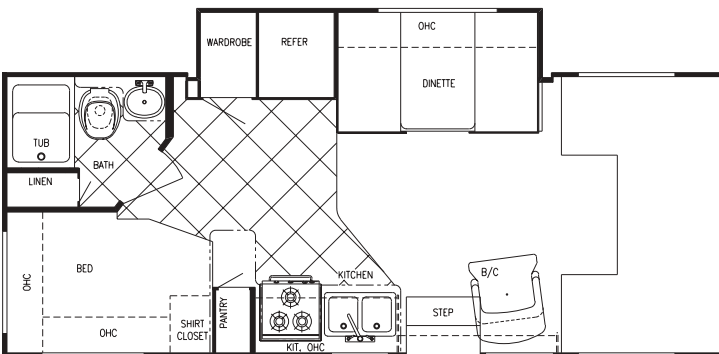


Chassis	Ford V-10
Fuel	37 gal
GVWR	10,700
Length	22'-4"
Height	11'-1"
Width	101"
Black	30 gal
Grey	30 gal
Fresh	22 gal
LP Gas Tank	62 lbs.
Furnace	25,000 BTUs
Water Heater	6 gal

Model W6211D (Sofa Opt.)



Chassis	Ford V-10
Fuel	55 gal
GVWR	14,050
Length	24'-2"
Height	11'-1"
Width	101"
Black	30 gal
Grey	30 gal
Fresh	32 gal
LP Gas Tank	62 lbs.
Furnace	25,000 BTUs
Water Heater	6 gal

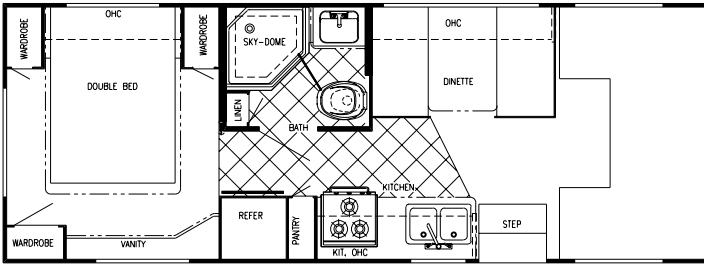


Chassis	Ford V-10
Fuel	55 gal
GVWR	14,050
Length	24'-5"
Height	11'-1"
Width	101"
Black	30 gal
Grey	30 gal
Fresh	32 gal
LP Gas Tank	62 lbs.
Furnace	25,000 BTUs
Water Heater	6 gal

FLOORPLANS Conquest LTS 2002

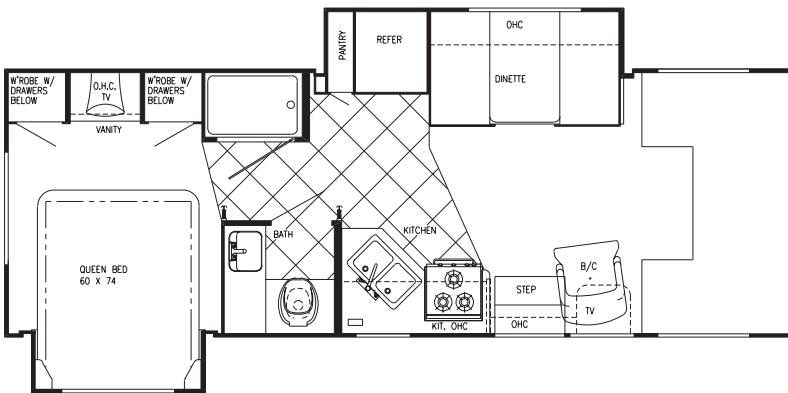


• LTS FLOORPLANS •

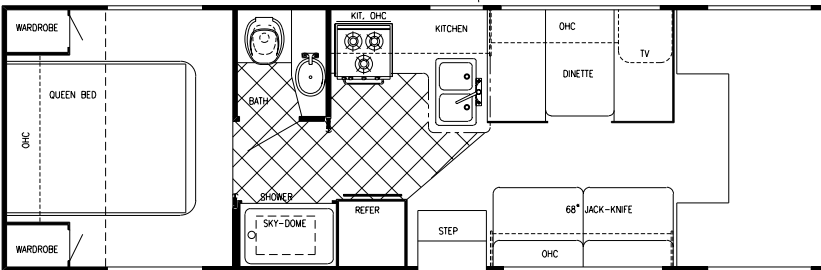


Chassis	Ford V-10
Fuel	55 gal
GVWR	11,500
Length	25'-11"
Height	11'-1"
Width	101"
Black	36 gal
Grey	36 gal
Fresh	34 gal
LP Gas Tank	62 lbs.
Furnace	25,000 BTUs
Water Heater	6 gal

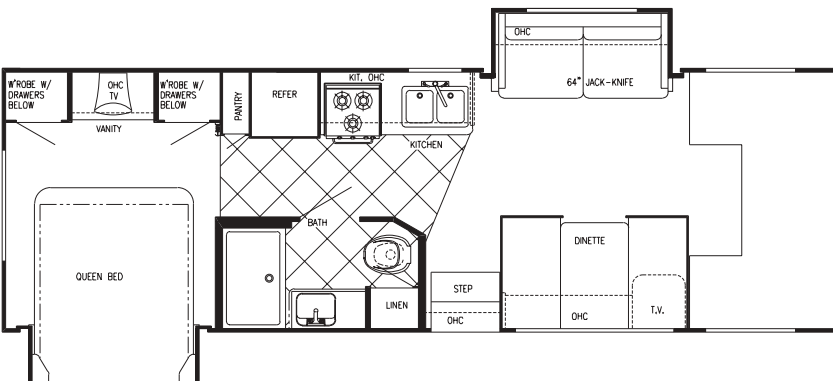
Model W6253D (Sofa Opt.)



Chassis	Ford V-10
Fuel	55 gal
GVWR	14,050
Length	27'-10"
Height	11'-1"
Width	101"
Black	36 gal
Grey	36 gal
Fresh	34 gal
LP Gas Tank	62 lbs.
Furnace	25,000 BTUs
Water Heater	6 gal



Chassis	Ford V-10
Fuel	55 gal
GVWR	14,050
Length	29'-3"
Height	11'-1"
Width	101"
Black	36 gal
Grey	36 gal
Fresh	34 gal
LP Gas Tank	62 lbs.
Furnace	25,000 BTUs
Water Heater	6 gal

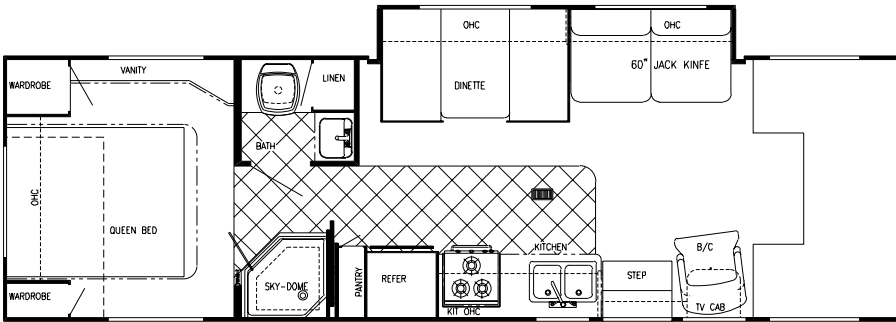


Chassis	Ford V-10
Fuel	55 gal
GVWR	14,050
Length	29'-9"
Height	11'-1"
Width	101"
Black	36 gal
Grey	36 gal
Fresh	34 gal
LP Gas Tank	62 lbs.
Furnace	30,000 BTUs
Water Heater	6 gal



Conquest LTS 2002

• LTS FLOORPLANS •



Chassis	Ford V-10
Fuel	55 gal
GVWR	14,050
Length	31'-7"
Height	11'-3"
Width	101"
Black	36 gal
Grey	36 gal
Fresh	34 gal
LP Gas Tank	62 lbs.
Furnace	30,000 BTUs
Water Heater	6 gal

Model W6316D (Twin Beds)

• LTS STANDARD SPECIFICATIONS •

Interior & Decor

- 6'-8" Interior Height
- Natural Hardwood Stile Cabinetry
- Natural Oak Frame Raised Panel Cabinet Doors (in galley)
- Privacy Curtain Cab
- Deluxe Carpet w/Pad
- Generous Overhead Storage
- 2-Way Driver & Passenger Seat
- Coordinated Bedspreads & Shams
- Decorator Curtains w/Valances (Std)
- Day/Night Shades (Opt)
- Interior Decorative Clock
- Rubber Entry Step
- Queen Size Bed, Cab-Over
- Power Vent in Commode
- Tub Surround
- Mini Blinds Kitchen
- Hydraulic-Operated Glide Out Room (slide out models)
- Raised Panel Refer Inserts
- Soft Touch Ceiling

Electrical Systems

- Easy Store 30' Elect. Power Cord
- Double Overhead Reading Lights
- 110 Volt Receptacles
- Ground Fault Circuit Interrupter
- Outside Receptacle
- TV Antenna w/Ampl & Boost
- Auxiliary Battery

- Electronic Converter w/Charger (45 Amp)
- Generator Prep
- Monitor Panel
- Battery Disconnect

Exterior & Construction

- Welded Aluminum Cage Const.
- 4-Ply Laminated Walls, Roof & Floor
- Smooth Fiberglass Exterior
- Radiused Laminated Rubber Roof w/Heliarc-Welded Aluminum Rafters, and Exclusive Molded Roof Brick Insulation w/Bubble Wrap Duct System
- Hydraulic Pump Override System
- Tubular Steel Floor
- Laminated Floor w/ Metal Underbelly
- Foamed, Sealed & Undercoated
- Full Basement Storage (most models)
- Distinctive Exterior Graphics
- Expansive Radius Windows
- Hose Storage Bumper
- Front Cab-Over Window (Opt.)
- Outside Grab Handle
- Chrome Bumper Cover
- Fiberglass Running Boards
- Dead Bolt on Entry Door
- Spare Tire and Carrier
- Roof Rack & Ladder (Opt.)
- Slide-Out Room Awning
- Pre-molded Front Fiberglass Cap & Wings
- Deluxe Awning (Opt)
- Rear Window (Opt)

Appliances

- Range Cover
- 3-Burner Range w/Oven
- 2-Way Dbl. Door Refer.
- Microwave Installed
- 6 Gal. Elect. Ign. Water Heater
- 13,500 BTU Roof Air

Bath & Water

- Glass Shower Door (W6274, W6280)
- Demand Water System
- City Water Hook-Up
- Lavatory w/Base Cabinet Storage
- Bath Convenience Accessories
- Water Bypass Valve
- Skydome in Shower (most models)
- Medicine Cabinet

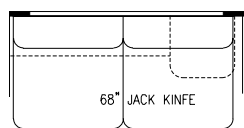
Chassis

- 6.8L, V-10 Engine
- E-40 Super Duty Chassis
- 4 Speed Auto. Overdrive Trans.
- Tilt Wheel Steering
- CD Player-AM/FM Stereo w/4 Speakers
- Power Brakes & Steering
- Radial Tires
- Cruise Control
- Dual Air Bags
- Deluxe Exterior Mirrors
- Stainless Steel Wheelinners

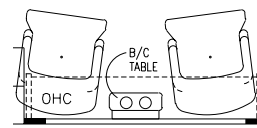
• OPTIONS •

Popular Options

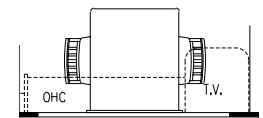
- Outside Entertainment Center
- Sliding Battery Tray
- Heated and Remote Mirrors
- Cabover Entertainment Center (Most Models)
- Side Cabover Entertainment Center
- 3 Speed Fantastic Fan In Bedroom
- Exterior Paint



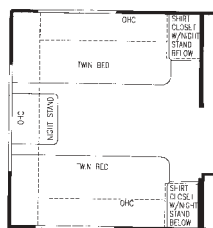
Jack Knife Sofa



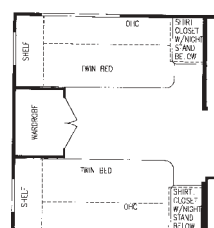
Barrel Chairs



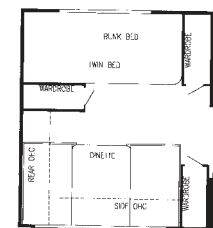
Free-Standing Dinette



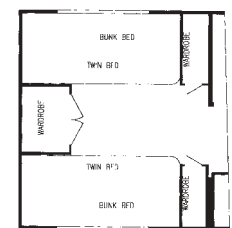
Twin Beds (Nightstand)



Twin Beds (Wardrobe)



Bunk Dinette



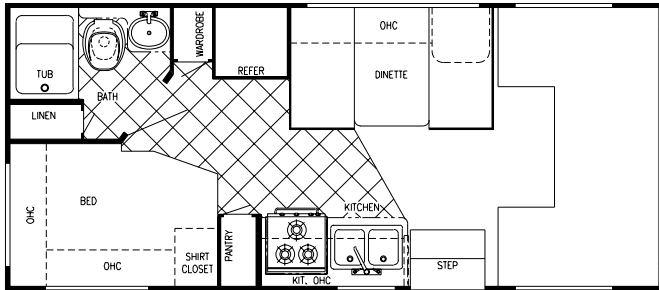
Bunk Beds

FLOORPLANS

Conquest Sport 2002

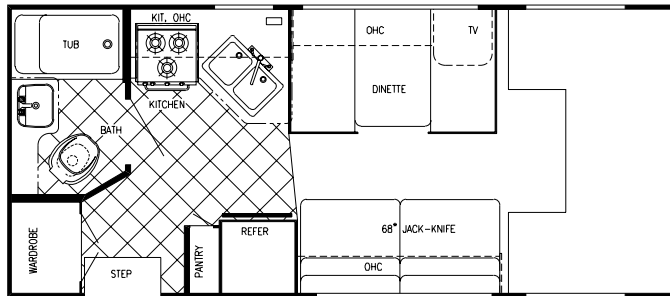


• CONQUEST SPORT FLOORPLANS •

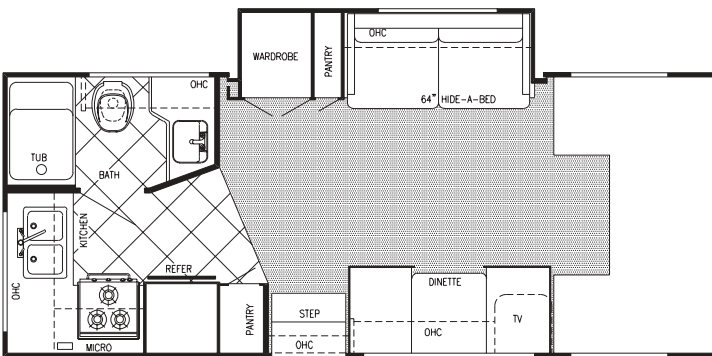


Chassis	Ford V-10
Fuel	37 gal
GVWR	10,700
Length	22'-4"
Height	11'-1"
Width	101"
Black	30 gal
Grey	30 gal
Fresh	32 gal
LP Gas Tank	48 lbs.
Furnace	25,000 BTUs
Water Heater	6 gal

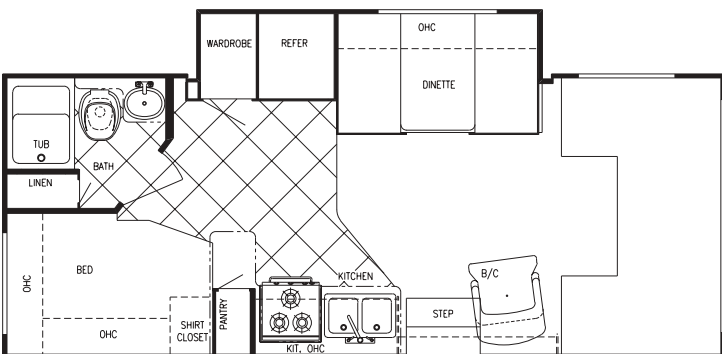
Model W6210S (Sofa Opt.)



Chassis	Ford V-10
Fuel	37 gal
GVWR	10,700
Length	22'-4"
Height	11'-1"
Width	101"
Black	30 gal
Grey	30 gal
Fresh	22 gal
LP Gas Tank	48 lbs.
Furnace	25,000 BTUs
Water Heater	6 gal



Chassis	Ford V-10
Fuel	55 gal
GVWR	14,050
Length	24'-2"
Height	11'-1"
Width	101"
Black	30 gal
Grey	30 gal
Fresh	32 gal
LP Gas Tank	48 lbs.
Furnace	25,000 BTUs
Water Heater	6 gal

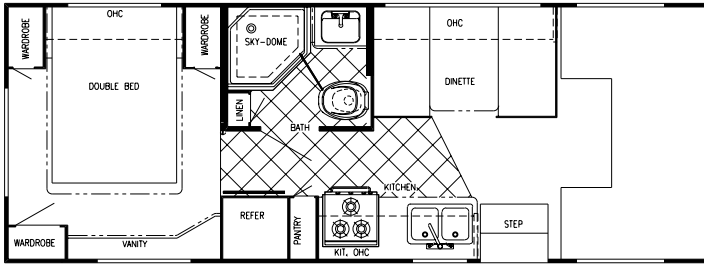


Chassis	Ford V-10
Fuel	55 gal
GVWR	14,050
Length	24'-5"
Height	11'-1"
Width	101"
Black	30 gal
Grey	30 gal
Fresh	32 gal
LP Gas Tank	48 lbs.
Furnace	25,000 BTUs
Water Heater	6 gal



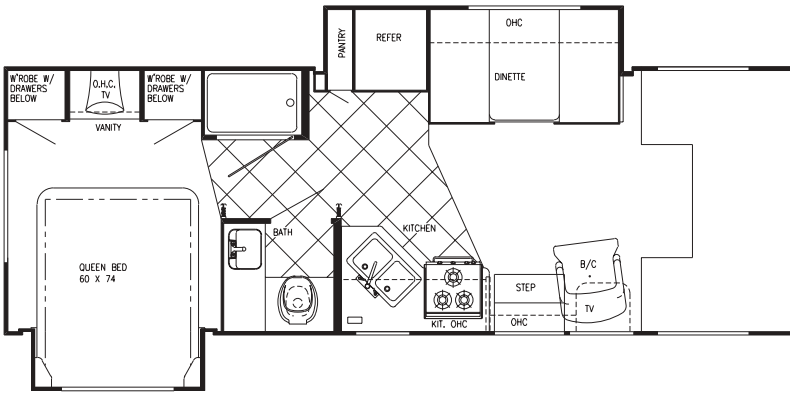
Conquest Sport 2002

• CONQUEST SPORT FLOORPLANS •

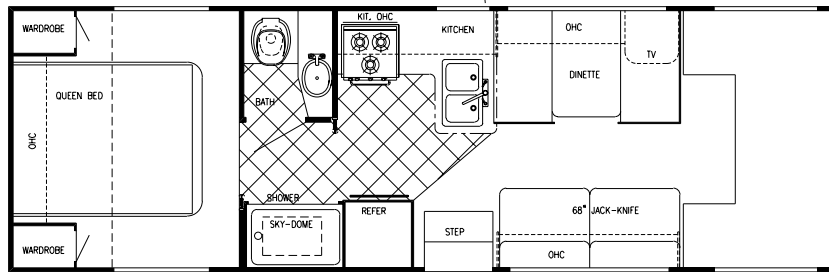


Chassis	Ford V-10
Fuel	55 gal
GVWR	11,500
Length	25'-11"
Height	11'-1"
Width	101"
Black	36 gal
Grey	36 gal
Fresh	34 gal
LP Gas Tank	48 lbs.
Furnace	25,000 BTUs
Water Heater	6 gal

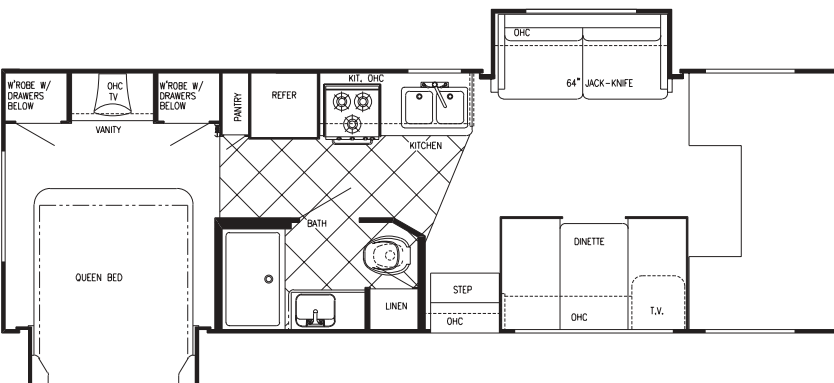
Model W6253S (Sofa Opt.)



Chassis	Ford V-10
Fuel	55 gal
GVWR	14,050
Length	27'-10"
Height	11'-1"
Width	101"
Black	36 gal
Grey	36 gal
Fresh	34 gal
LP Gas Tank	48 lbs.
Furnace	25,000 BTUs
Water Heater	6 gal



Chassis	Ford V-10
Fuel	55 gal
GVWR	14,050
Length	29'-3"
Height	11'-1"
Width	101"
Black	36 gal
Grey	36 gal
Fresh	34 gal
LP Gas Tank	48 lbs.
Furnace	25,000 BTUs
Water Heater	6 gal



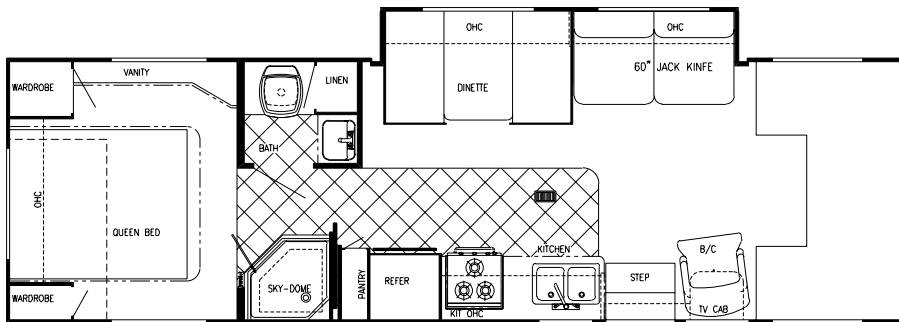
Chassis	Ford V-10
Fuel	55 gal
GVWR	14,050
Length	29'-9"
Height	11'-1"
Width	101"
Black	36 gal
Grey	36 gal
Fresh	34 gal
LP Gas Tank	48 lbs.
Furnace	30,000 BTUs
Water Heater	6 gal

FLOORPLANS

Conquest Sport 2002



• CONQUEST SPORT FLOORPLANS •



Chassis	Ford V-10
Fuel	55 gal
GVWR	14,050
Length	31'-7"
Height	11'-1"
Width	101"
Black	36 gal
Grey	36 gal
Fresh	34 gal
LP Gas Tank	48 lbs.
Furnace	30,000 BTUs
Water Heater	6 gal

Model W6316S (Twin Beds)

• CONQUEST SPORT SPECIFICATIONS •

Interior & Decor

- 6'-8" Interior Height
- Stile Constructed Cabinetry
- Privacy Curtain Cab
- Deluxe Carpet w/Pad Throughout
- Generous Overhead Storage
- 2-Way Driver & Passenger Seat
- Coordinated Bedspreads & Shams
- Decorator Curtains & Shades w/Valances
- Queen Size Bed, Cab-Over
- Power Vent in Commode
- Natural Oak Framed Raised Panel Cabinets Doors (in Galley Area)

Electrical Systems

- Easy Store 30' Elect. Power Cord
- Overhead Reading Lights
- 110-Volt Receptacles
- Ground Fault Circuit Interrupter
- Outside Receptacle
- TV Antenna w/Amp & Boost
- Auxiliary Battery
- Electronic Converter w/Charger (45 Amp)
- Generator Prep
- Battery Disconnect

Bath & Water

- Demand Water System
- City Water Hook-Up
- Lavatory w/Base Cabinet Storage
- Water Bypass Valve
- Tub Surround

Exterior & Construction

- Smooth Fiberglass Exterior
- Rear Ladder (Opt.)
- Chrome Bumper Cover
- Deluxe Awning (Opt.)
- Welded Aluminum Cage Const.
- 4-Ply Lam. Walls, Roof & Floor
- Laminated Rubber Roof w/Heliarc-Welded Aluminum Rafters
- Tubular Steel Floor
- Laminated Floor w/ Metal Underbelly
- Foamed, Sealed & Undercoated
- Generous Above-Floor Ext. Storage
- Generous Ext. Basement Storage
- Distinctive Exterior Graphics
- Expansive Radius Windows
- Hose Storage Bumper
- Front Cab-Over Window (Opt.)
- Outside Grab Handle
- Porch Light
- Dead Bolt on Entry Door

- Spare Tire and Carrier
- Mag-Lock Wheel Covers
- Aluminum Running Boards
- Rear window (Opt)

Appliances

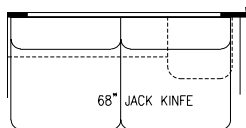
- 3-Burner Range Top
- Power Range Hood
- 2-Way Double Door Refrigerator
- Microwave
- 13,500 BTU Roof Air
- LP Leak Detector
- Carbon Monoxide Detector
- Monitor Panel

Popular Options

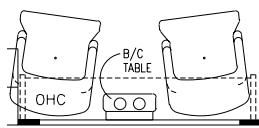
- Chevy 8.1 Ltr.s (6210, 6211, 6253, 6280)
- LP Gas Oven
- Emergency Start Switch

Ford Chassis

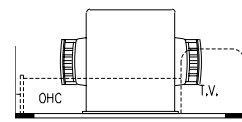
- 4 Speed Automatic Overdrive Transmission
- Tilt Wheel Steering
- CD Player-AM/FM Stereo w/4 Speakers
- Power Brakes & Steering
- Radial Tires
- Cruise Control



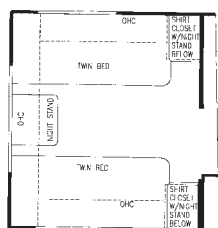
Jack Knife Sofa



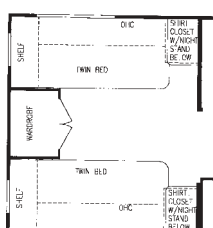
Barrel Chairs



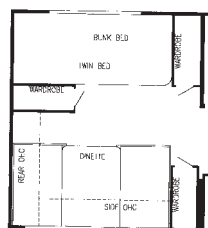
Free-Standing Dinette



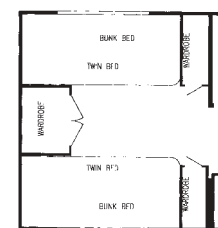
Twin Beds (Nightstand)



Twin Beds (Wardrobe)



Bunk Dinette



Bunk Beds

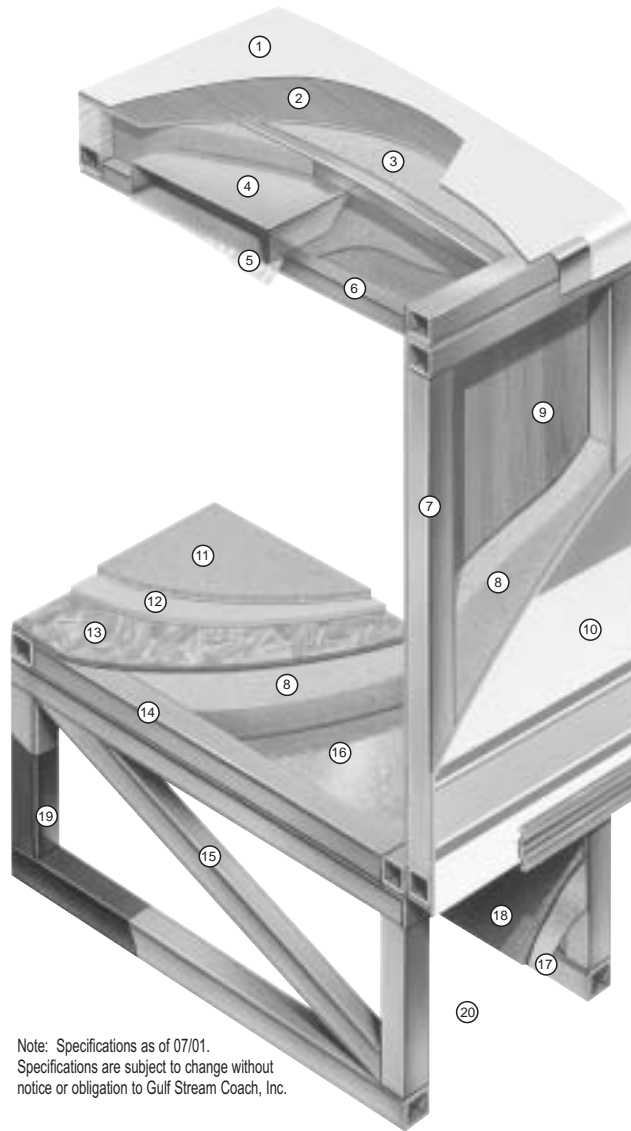
STRENGTH Conquest 2002



• CRADLE OF STRENGTH • Take the Time to Compare

Motorhomes Built To Last

1. Seamless Rubber Roof For Greater Energy Efficiency and Dependability.
2. Luan Decking for Additional Strength.
3. Molded, High Density EPS (Expanded PolyStyrene) Roof Brick Insulation - Provides Consistent Insulative Value As Well As Superior Dimensional Rigidity.
4. One-Piece Formed Aluminum Air Conditioning Duct, Completely Surrounded By EPS Insulation.
5. Bubble-Wrapped Foil Insulation Provides Superior Insulation and Helps Prevent Condensation.
6. Rugged Welded Tubular Aluminum Roof Framing.
7. Rugged Heavy-Gauge Tubular Aluminum, Fixture Welded to Form the Sidewall Framing.
8. High-Density EPS Insulation Provides Superior Laminating and Bonding Characteristics and Insures Greater Energy Efficiency.
9. Interior Wall Panels Securely Laminated to Sidewall Framing.
10. "Mende" Fiberglass Exterior Vacuum-bond Laminated to Sidewall Framing for Lasting Beauty and Durability. (Super Slick - Classic)
11. High-Quality Stain-Resistant Carpeting Available in Designer Coordinated Colors.



Note: Specifications as of 07/01.
Specifications are subject to change without notice or obligation to Gulf Stream Coach, Inc.

12. Extra-Thick Padding Under Carpet Provides Extra Comfort and Increases Carpet Durability.
13. Seamless Structurewood Floor Decking Laminated to Steel Floor Structure Assures a Quiet, Long-Lasting, Rigid Floor and comes with a 10-Year Warranty.
14. Heavy-Gauge Tubular Steel Framing, Fixture Welded for Extra Strength and Stability.
15. Heavy-Gauge Tubular Steel Framed, Fixture Welded Floor Truss System Provides the Strongest Class C Foundation in the Industry.
16. Seamless Layer of Galvanized Steel Securely Laminated to the Steel Floor Framing.
17. Galvanized Steel Used to Form Each Storage & Holding Compartment.
18. Durable All-Weather Carpeting Completes Each Accessible Storage Compartment, Providing Extra Protection for Luggage and Valuables.
19. Rust-Prohibitive Paint Coating Applied to All Steel Framing Assures Corrosion and Rust Protection.
20. The Industry's Strongest, Most Spacious Exterior Storage Compartments.



POST OFFICE BOX 1005 NAPPANEE, IN 46550
• YOUR DEALER •



VISIT
www.gulfstreamrv.com

FOR MORE DETAILED INFORMATION...
OR CALL 1-800-765-8787 EXT. 3288

* All weights and measures are approximate and subject to change without notice. For more information, contact your local dealer, www.gulfstreamRV.com or Gulf Stream Coach, Inc. Gulf Stream Coach, Inc. reserves the right to make changes in prices, colors, materials, components and specifications and to discontinue models at any time without notice or obligation. Gulf Stream Coach, Inc. assumes no responsibility for any error in type or print reproduction of specifications or floorplans in this brochure. Photographs may show equipment or items that are optional and are not included in the purchase price of each coach, fifth wheel or trailer. © Copyright 2001 Gulf Stream Coach, Inc. Nappanee, Indiana USA

11/01-SP-15k