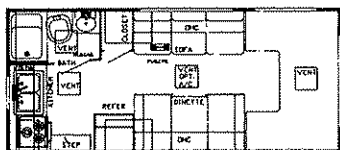


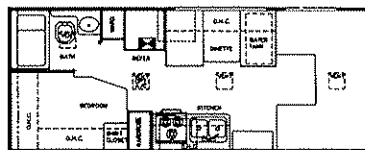


Conquest - 2000 Series

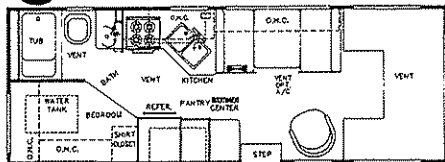
BY GULF STREAM



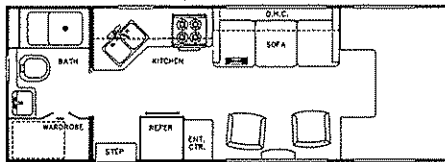
Model 6200



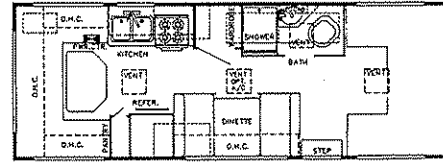
Model 6210



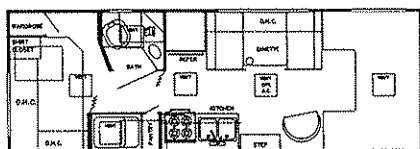
Model 6232



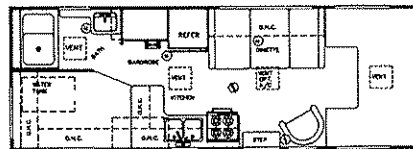
Model 6233



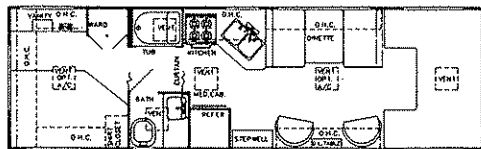
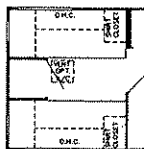
Model 6235



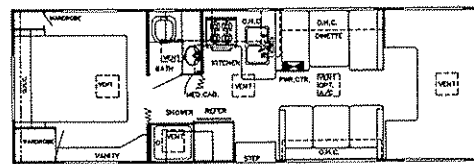
Model 6242



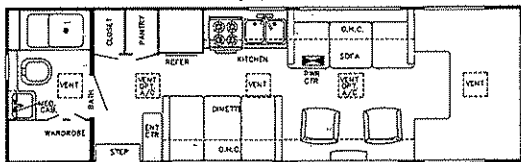
Model 6243



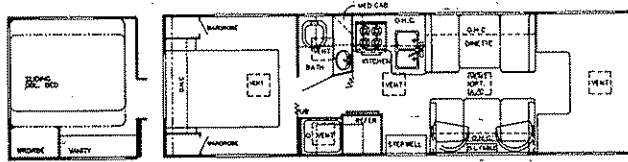
* Model 6262 (Twin Bed Opt.)



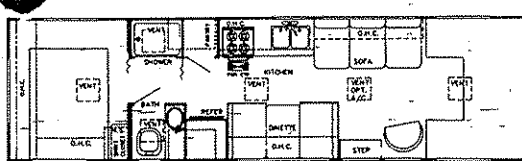
* Model 6272 (Wide Body)



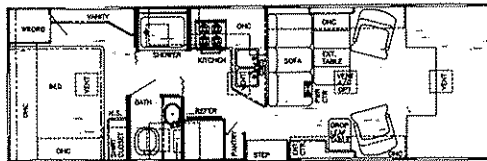
Model 6263



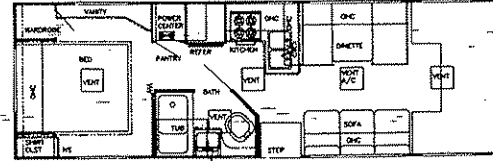
* Model 6272 (Opt. Rear Sliding Bed, or Opt. Twin Bed)



* Model 6291 (Twin Beds Available)



Model 6292 (Wide Body)



* Model 6293 (Wide Body)

Conquest - 2000 Series

BY GULF STREAM

Standard Specifications

Exterior and Construction

- Welded tubular aluminum cage construction
- Tubular steel floor
- Laminated floor w/metal underbelly
- High-density foam insulation in floors, walls and roof
- 4-Ply laminated sidewalls, roof and floor
- Durable fiberglass siding
- Aerodynamic styling
- Generous exterior storage compartments
- Protective bodyside molding
- Distinctive exterior graphics
- Expansive radius slider windows
- Hose storage bumper
- Self-stowing entry step
- Front cab-over window
- Metal flip ends on rear bumper
- Pre-wired & reinforced for roof air
- Outside entry grab handle
- Porch light
- Deadbolt lock on entry door
- Full Rubber Roof

Interior and Decor

- 6'-8" Interior height
- Stile-constructed oak cabinetry
- Separate dinette
- Barrel chairs (some models)
- Generous overhead storage
- Deluxe carpet w/pad throughout
- Brass accent trim on overhead cabinet doors
- Decorator window curtains and shades w/fabric valances
- Queen-size bed - cabover
- Full-size bed - bedroom
- Decorative radius-cornered countertop w/custom edging
- Family-style folding table (some models)
- Mini-blinds kitchen & bath
- Fire extinguisher
- Plush fabrics

Electrical Systems

- Easy-store 25' electric supply cord
- Overhead reading lights
- 110-volt receptacles
- Ground fault circuit interrupter
- Well-illuminated interiors
- Outside receptacle

Bath and Water

- Dual holding tanks - approx. 62 gal.
- Fresh water capacity - approx. 38 gal.
- Demand water system
- City water hook-up
- Tub/shower combo
- Lavatory w/base cabinet storage
- Built-in medicine cabinet
- Outside fresh water tank drain
- Quick-recovery 6 gal. gas water heater
- Power vent in bath
- Bath convenience accessories

Galley Appliances

- Oven w/brushed chrome door
- Double stainless steel sink
- Sink covers
- 4-burner gas range
- Lighted power range hood
- Large single-door refrigerator
- Pre-wired for microwave

Heating, Ventilation & A/C

- 25,000 BTU ducted furnace w/thermostat
- Screened entry door
- 42lb. propane tank

Chevrolet Chassis

- Standard on 20', 21', 23' and 24' models
- 350 CID fuel injected engine
- 4-Speed automatic transmission with over-drive
- Tilt wheel
- Power brakes and steering
- Deluxe exterior mirrors
- Radial tires
- Gasoline tank - approx. 32 gal.

Ford Chassis

- Standard on 26', 27' and 29' models
- Available on 20', 21', 23' and 24' models
- 460 CID fuel injected engine
- 4-Speed automatic transmission with over-drive
- Tilt wheel
- Power brakes and steering
- Deluxe exterior mirrors
- Radial tires
- Gasoline tank - approx. 40 gal.



Gulf Stream Coach, Inc.

P.O. Box 1005 • Nappanee, IN • 46550

Your Dealer