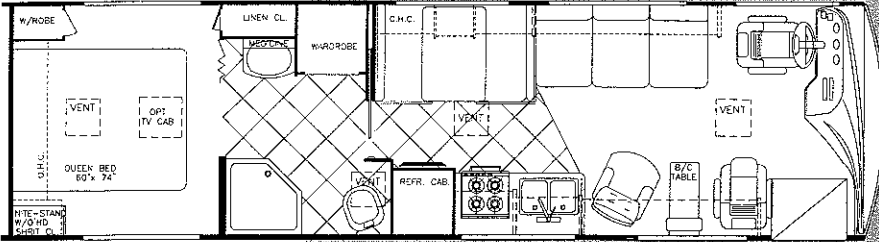


10/98

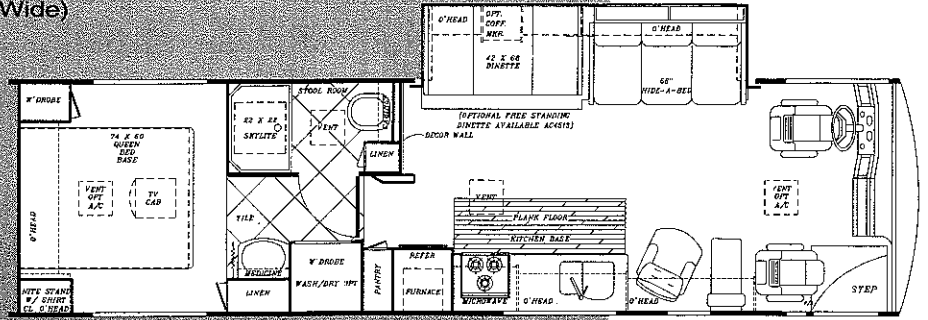
Sun Voyager®



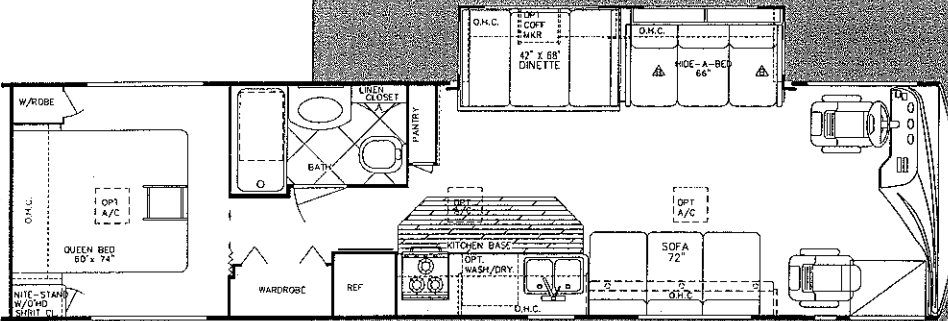
DIESEL MODELS



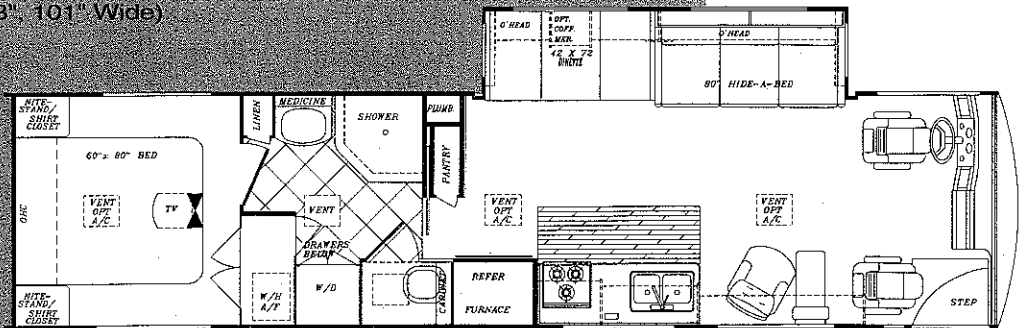
Model 8293 MXD (Approx. 31'-4", 101" Wide)



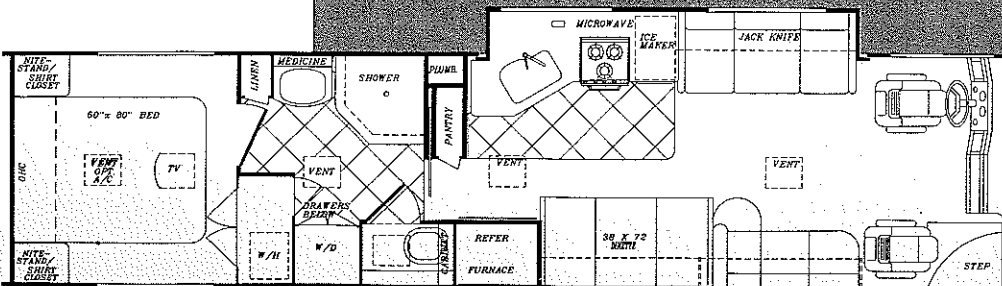
Model 8294 MXD (Approx. 33'-8", 101" Wide)



Model 8342 MXD (Approx. 33'-8", 101" Wide)



Model 8352 MXD (Approx. 36'-8", 101" Wide)



Model 8362 SVB (Approx. 36'-10", 101" Wide)

Sun Voyager

GAS MODELS	8314	8334	8347	8348	8350	8354	8362
FORD Chassis:	V-10	V-10	V-10	V-10	V-10	V-10	V-10
Wheelbase	190"	228"	228"	228"	228"	228"	208"+43"
GVWR (lbs.)	18,000	18,000	20,500	20,500	20,500	20,500	20,500
Front Gross Axle Wt. Rating	7,000	7,000	7,000	7,000	7,000	7,000	7,000
Rear Gross Axle Wt. Rating	11,000	11,000	13,500	13,500	13,500	13,500	13,500 (tag)
CHEVROLET Chassis:							
Engine (HP)	454	N/A	N/A	N/A	N/A	N/A	N/A
Wheelbase	190"	---	---	---	---	---	---
GVWR (lbs.)	16,500	---	---	---	---	---	---
Front Gross Axle Wt. Rating	5,500	---	---	---	---	---	---
Rear Gross Axle Wt. Rating	11,000	---	---	---	---	---	---
DIMENSIONS:							
Overall Length	31' 5"	34' 6"	34' 8"	34' 11"	34' 8"	34' 6"	36' 8"
Overall Height w/Roof A/C	11' 11"	11' 11"	11' 11"	11' 11"	11' 11"	11' 11"	11' 11"
Overall Width	101"	101"	101"	101"	101"	101"	101"
Interior Height	83"	83"	83"	83"	83"	83"	83"
Interior Width	97"	97"	97"	97"	97"	97"	97"
CAPACITIES:							
Fresh Water Tank (Gal.)	50	75	75	75	75	50	75
Grey Holding Tank (Gal.)	50	50	50	50	50	50	50
Black Holding Tank (Gal.)	50	50	50	50	50	50	50
Water Heater w/DSI (Gal.)	6	6	6	6	6	10	6
LP Gas Tank (lbs.)	85	85	85	85	85	85	85
Fuel Tank (Gal.) Ford/Chevy	75/80	75	75	75	75	75	75
Furnace (BTU's)	40K	40K	40K	40K	40K	40K	40K

Interior and Decor

- Natural Oak Cabinet Doors
- Solid Surface Countertops w/Deep Solid Surface Sink and Deluxe Sprayer Faucet
- 22" Metal Drawer Guides w/Nylon Rollers
- Silverware Drawer and Drawer Front
- Nearly 7' of Interior Ceiling Height
- Residential Sized Cabinets and Overheads
- Windshield Privacy Drape
- Deluxe Furniture
- 3-Way Driver & Passenger Seats
- Deluxe Carpet w/Pad
- Coordinated Bedspread & Shams
- Lighted Closets
- Decorator Mirror (where available)
- Generous Overhead Storage
- Day/Night Shades

Electrical Systems

- Easy-Access Dual Battery System
- 12-volt, 45-Amp Converter
- Electric Supply Cord
- Electric Overload Protection
- Automotive-Type, Color-Coded Wiring
- Lighted Entry & Aisle Lights
- Directional Reading/Map Lights
- Battery Disconnect

Exterior and Construction

- "Cradle of Strength" Construction:
 - Formed Steel Sub-Floor Truss Structure
 - Insulated Floors w/Virtually Seamless Weyerhaeuser Structurwood Decking
 - Vacuum-Bond Laminated 2" Thick Sidewall Construction w/Seamless Fiberglass
- High-Density Block Foam Insulation Throughout Sidewalls and Roof
- Radiused Laminated Rubber Roof w/Tubular Metal Rafters
- Molded Roof Brick Insulation in Roof, Surrounding Ducted Roof A/C Vents
- Heated & Fully Enclosed Holding Tanks
- Automotive-Style Bumpers
- Generous Pass-Through Basement Storage, Including a Full-Width Rear Trunk Area
- Hinged Exterior Storage Doors
- Tri-Mark Exterior Storage Compartment Latches & Locks
- Fully Welded Steel Firewall
- Below Floor Storage Area's are Constructed of Galvanized Steel (not plywood or plastic)
- Deluxe Exterior Paint Graphics (tape accents)
- Protective Vinyl Front Bra

Bath and Water

- Demand Water System
- City Water Hook-Up
- Deep Solid Surface Sink (Kitchen)
- Sink Covers
- Residential Rectangular Shower (most models)
- Mirrored Medicine Cabinet
- Super-Flow Manifold Water Distribution System
- Deluxe Pedal Stool w/Sprayer
- Sky Dome Over Shower
- Glass Shower Enclosure

Appliances

- 3-Burner High-Performance Range
- Lighted Power Range Hood
- Double Door, 2-Way Refrigerator
- Large Microwave Oven (Opt.)

Heating & A/C

- Ducted Furnace w/Elect. Ignition (40,000 BTU's)
- Pre-Wired for Ducted Roof A/C

SPECIFICATIONS

Gas Models

- Electronic Ignition
- Power Steering & Brakes
- High-Capacity Auto. Heater
- Tilt Steering Wheel
- Tag Axle System (8362 Gas)

Diesel Models

- Spartan EXP 2001, 19,000 lb. GVWR Chassis w/Cummins 6BT 5.9, 210HP @2500 RPM 520 ft.lb. Torque @1600 RPM Turbo-Charged Rear Mounted Diesel Engine (8293, 9294)
- Allison AT-542 4-Speed Automatic Transmission
- Air Over Hydraulic 15" Dia. Front & Rear Disc Brakes w/ Air Actuated, Spring-Applied Parking Brake
- Full Air-Ride Suspension
- Spartan Alpine ST, 23,000 lb. GVWR Chassis w/Cummins 275 HP @ 2500 RPM, 605 ft. lb. Torque @ 1700 RPM, Turbo-Charged Rear Mounted Diesel Engine w/Allison Transmission (8342 & 8352 only)
- Spartan Alpine GT, 25,750 lb. GVWR Chassis w/Cummins 8.3L, 275 HP, 800 ft. lb. Torque, Turbo-Charged Rear Mounted Diesel Engine w/ 6-Speed Allison World Transmission, Raised Rail, Exhaust Brake, 22.5" Tires (8362 only)

DIESEL MODELS	8293	8294	8342	8352	8362
SPARTAN Chassis:	EXP 2001	EXP 2001	ALPINE ST	ALPINE ST	ALPINE GT
Engine (HP)	210	210	275	275	275
Wheelbase	172"	190"	208"	234"	234"
GVWR (lbs.)	19,000	19,000	23,000	23,000	25,750
Front Gross Axle Wt. Rating	7,000	7,000	8,000	8,000	9,000
Rear Gross Axle Wt. Rating	12,000	12,000	15,000	15,000	16,750
DIMENSIONS:					
Overall Length	31' 4"	33' 8"	33' 8"	36' 8"	36' 10"
Overall Height w/Roof A/C	11' 11"	11' 11"	11' 11"	11' 11"	12' 1"
Overall Width	101"	101"	101"	101"	101"
Interior Height	80"	80"	80"	80"	80"
Interior Width	97"	97"	97"	97"	97"
CAPACITIES:					
Fresh Water Tank (Gal.)	75	50	90	90	100
Grey Holding Tank (Gal.)	50	50	50	50	50
Black Holding Tank (Gal.)	50	50	50	50	50
Water Heater w/DSI (Gal.)	6	6	10	10	10
LP Gas Tank (lbs.)	85	85	85	115	150
Fuel Tank (Gal.)	80	80	80	80	100
Furnace (BTU's)	40K	40K	40K	40K	40K

Deluxe Standard Features

- Auto Dash Air Conditioner
- Auto Cruise Control
- Wheel Covers
- AM/FM Cassette w/4 Spkrs.
- Monitor Panel
- Stainless Steel Entry Assist Grab Handle
- Power Vent in Commode
- Converter w/Battery Charger
- Auxiliary Battery
- 19" Color TV in Front Overhead
- Carbon Monoxide Detector
- TV Antenna
- LP Gas Leak Detector
- Awning Rail

Popular Options

- Drivers Door (gas models)
- Exterior Radio/Cassette Compartment
- Wood Plank Flooring
- 6-Panel Oak Refrigerator Inlay
- Maple Cabinetry Interior

Your Dealer:

For further information and available floorplan options contact your local dealer or Gulf Stream Coach, Inc. Gulf Stream Coach, Inc. reserves the right to make changes in prices, colors, materials, components and specifications and to discontinue models at anytime without notice or obligation. Gulf Stream Coach, Inc. assumes no responsibility for any error in type or print reproduction of specifications or floorplans in this brochure.

TP 20M 10/98 © 1998 Gulf Stream Coach, Inc. - Nappanee, Indiana



P.O. Box 1005 • Nappanee, IN 46550

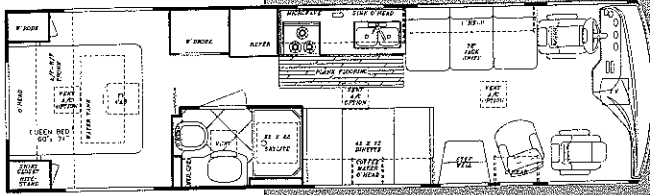
1-800-289-8787, Ext. 3288

Visit our Web Site at:
www.GULFSTREAMCOACH.com

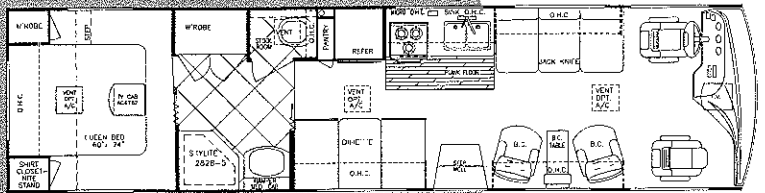
Sun Voyager®



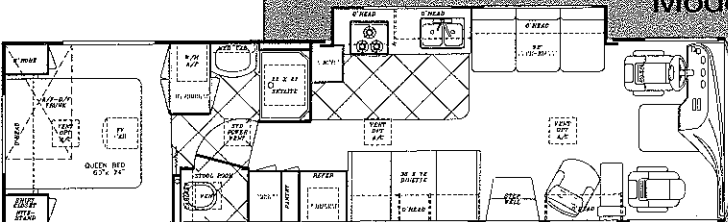
GAS MODELS



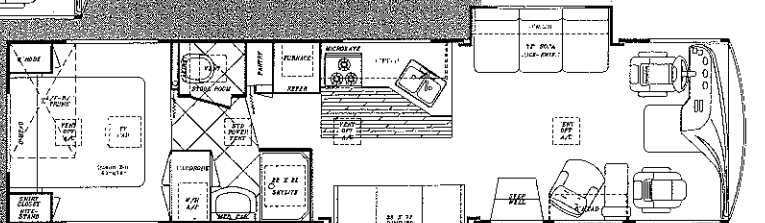
Model 8314 MXG (Approx. 31'-5", 101" Wide)



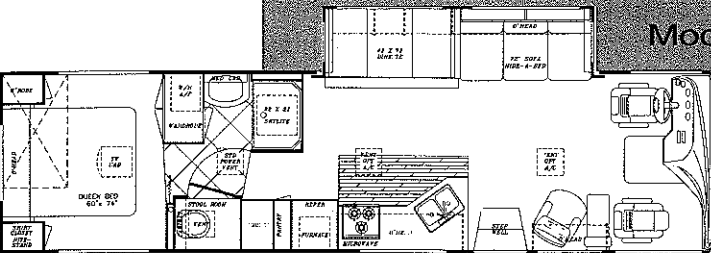
Model 8334 MXG (Approx. 34'-6", 101" Wide)



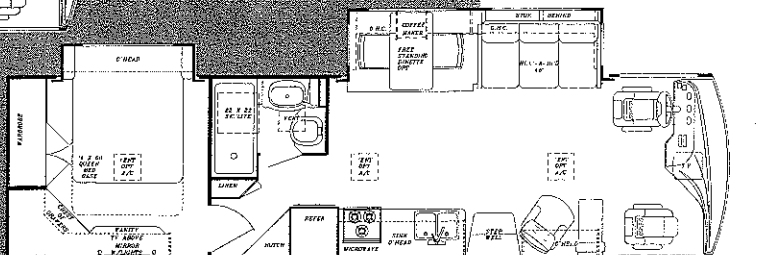
Model 8347 MXG (Approx. 34'-8", 101" Wide)



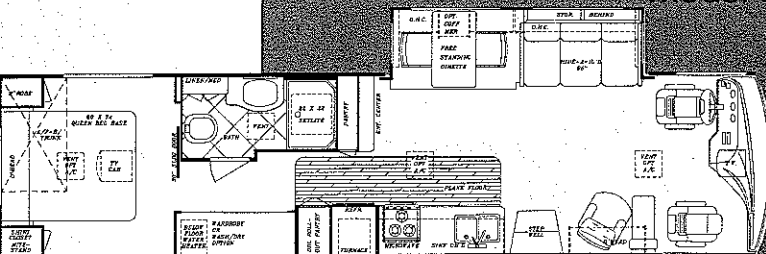
Model 8348 MXG (Approx. 34'-11", 101" Wide)



Model 8350 MXG (Approx. 34'-8", 101" Wide)



Model 8354 MXG (Approx. 34'-6", 101" Wide)



Model 8362 MXG (Approx. 36'-8", 101" Wide)