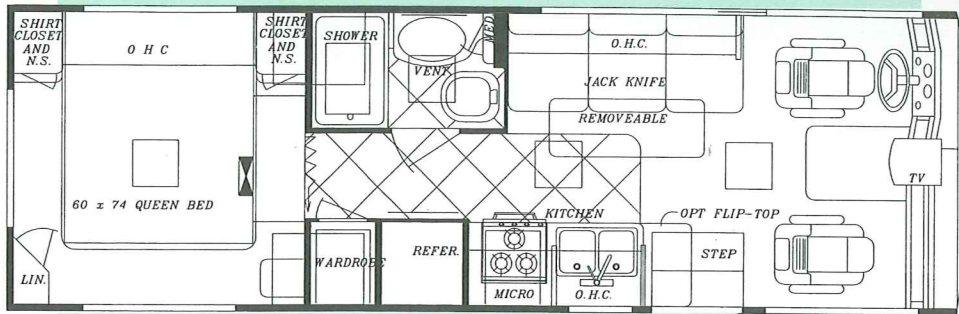
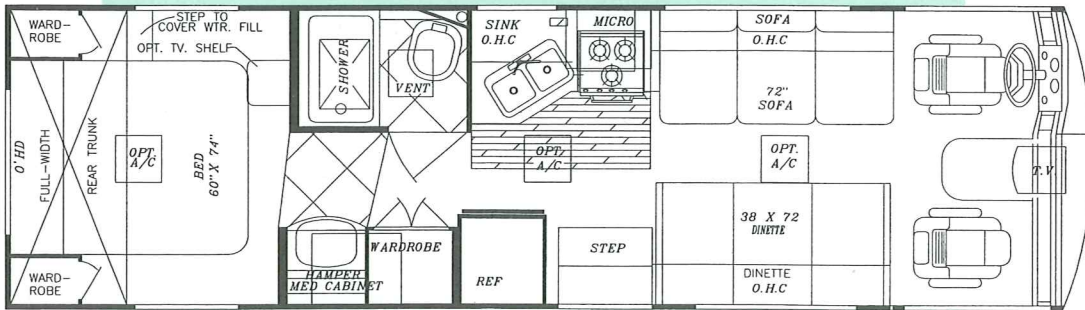


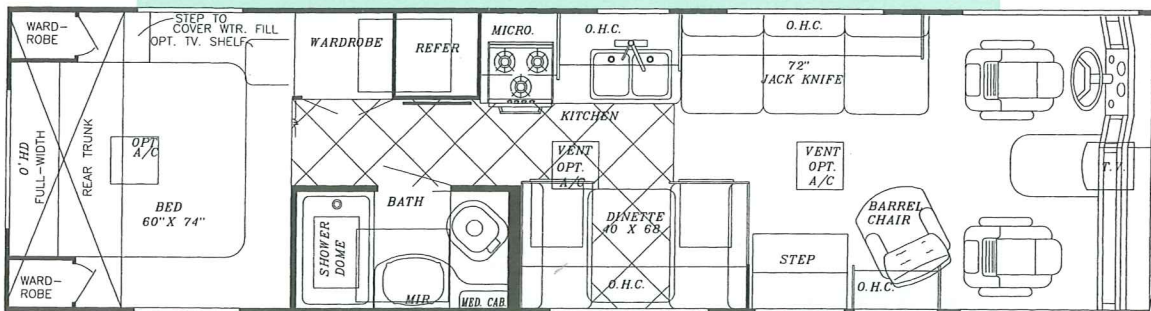
Palm Breeze



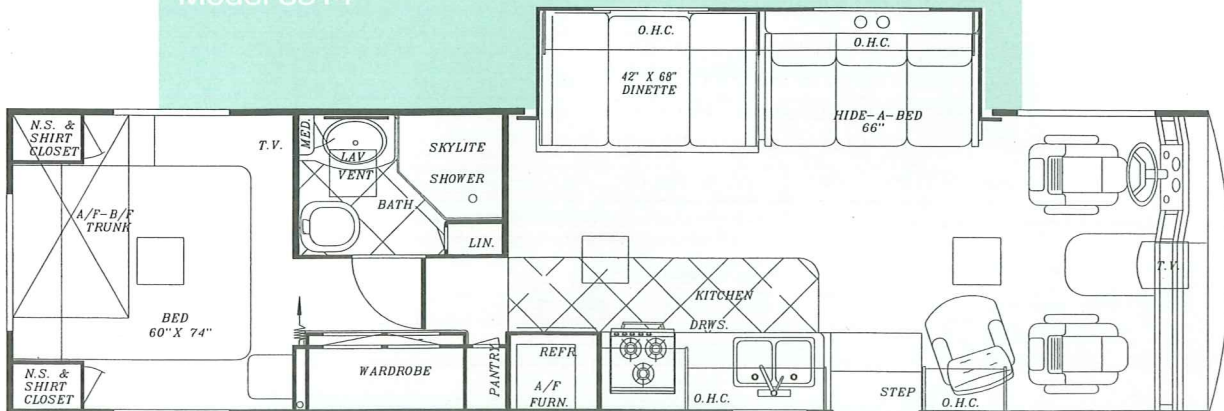
Model 8250



Model 8290



Model 8314



Model 8325

Palm Breeze

BY GULF STREAM®

Interior and Decor

- Self-Edged & Radius-Cornered Countertops
- Oak Knife Holder in Kitchen Countertop
- Custom Padded Dash w/ Illuminated Gauges
- Windshield Privacy Drape
- Designer Cloth Cockpit Seats
- Upgrade Deluxe Carpet w/Pad
- Deluxe Quality Furniture
- 3-Way Driver Seat
- Coordinated Bedspread
- Decorative Picture at Dinette
- Generous Overhead Storage
- Extra Large Under Bed Storage
- Mid Door Carpeted Stepwell Cover
- Window Valances

Exterior and Construction

- **"Cradle of Strength" Construction:**
 - Tubular Steel Cage Construction
 - Welded Steel Truss Sub-Floor
- Vacuum-Bond Laminated Sidewalls
- Block Foam Insulation in Roof & Sidewalls
- Heated & Fully-Enclosed Holding Tanks
- Tri-Mark Exterior Storage Door Latches & Locks
- Radius Entry Door
- Smooth Fiberglass Exterior
- Automotive Style Aluminum Front Grill
- Tinted Windshield and Windows
- Outstanding Exterior Storage
- Deluxe Outside Mirrors
- Seamless Rubber Roof

Bath and Water

- Demand Water System
- City Water Hook-Up
- Double Stainless Steel Sink
- Tub/Shower combination
- Marine Toilet
- Gravity Drains on Fresh Water Lines
- Skydome in Shower/Bath

Electrical Systems

- On Dash Emergency Start
- Easy-Access Dual Battery System
- 12-Volt, 45-Amp Converter
- Electric Supply Cord
- Electric Overload Protection
- Generator Compartment
- Automotive-Type, Color-Coded Wiring
- 12-Volt Battery Disconnect

Heating, Ventilation & Air Conditioning

- 35,000 BTU Ducted Furnace w/Elect. Ign. (25M on 8250)
- Pre-Wired for Roof A/C

Deluxe Standard Features

- 19" Color TV w/Remote
- Microwave Oven
- 6 Gal. Elect. Ign. Water Heater
- TV Antenna w/Amp and Boost & 2 Jacks
- Spare Tire
- Wheel Covers
- AM/FM Cassette Stereo w/4 Speakers
- Monitor Panel
- Generator Ready
- Converter w/Battery Charger
- Auto Start Switch

Chassis

- GM - 454 CID V-8 Engine w/Electronically Shifted 4-Speed Automatic Transmission
- FORD - Super Duty w/Triton V-10 and 4-Speed Automatic Transmission
- Electronic Ignition
- Power Steering and Brakes
- High Capacity Automotive Heater & A/C - w/R134 Environmental Refrigerant
- Tilt Steering Wheel
- Cruise Control

Appliances

- 3-Burner High-Performance Range
- Lighted, Power Range Hood
- 2-Door, 2-Way Refrigerator

Specifications

MODEL	8250	8290	8314	8325
FORD CHASSIS	V-10	V-10	V-10	V-10
Wheelbase	158"	190"	190"	208"
GVWR	15,700 lb.	15,700 lb.	15,700 lb.	18,000 lb.
Front Gross Axle Weight Rating	6,000 lb.	6,000 lb.	6,000 lb.	7,000 lb.
Rear Gross Axle Weight Rating	11,000 lb.	11,000 lb.	11,000 lb.	11,000 lb.
CHEVY CHASSIS (Vortex)	454	454	454	454
Wheelbase	158"	190"	190"	208"
GVWR	12,300 lb.	14,800 lb.	14,800 lb.	16,500 lb.
Front Gross Axle Weight Rating	4,800 lb.	5,500 lb.	5,500 lb.	5,500 lb.
Rear Gross Axle Weight Rating	7,500 lb.	10,000 lb.	10,000 lb.	11,000 lb.
*Exterior Length	25' - 8"	29' - 8"	30' - 10"	32' - 7"
*Exterior Height (with A/C)	11' - 3"	11' - 3"	11' - 3"	11' - 3"
Overall Width	94"	94"	94"	94"
Interior Height	78"	78"	78"	78"
Interior Width	91"	91"	91"	91"
*Fresh Water Tank	50 Gal.	50 Gal.	50 Gal.	50 Gal.
*Gray Holding Tank	40 Gal.	40 Gal.	40 Gal.	40 Gal.
*Black Holding Tank	40 Gal.	40 Gal.	40 Gal.	40 Gal.
Water Heater w/DSI	6 Gal.	6 Gal.	6 Gal.	6 Gal.
LP Gas Tank	65 lbs.	65 lbs.	65 lbs.	85 lbs.
Fuel Capacity (Ford/GM)	75/60 gal.	75/80 gal.	75/80 Gal.	75/80 Gal.
Furnace (BTU's)	25,000	35,000	35,000	35,000

*Approximate, and subject to change without notice.



For further information, contact your local dealer or Gulf Stream. Gulf Stream Coach, Inc. reserves the right to make changes in prices, colors, materials, components and specifications and to discontinue models at any time without notice or obligation. Gulf Stream Coach, Inc. assumes no responsibility for any error in type or print reproduction of specifications or floorplans in this brochure. TP ER 20M 10/98



P.O. BOX 1005 • NAPPANEE, IN 46550

1-800-289-8787, ext. 3288

Visit our Web Site at:
www.GULFSTREAMCOACH.com