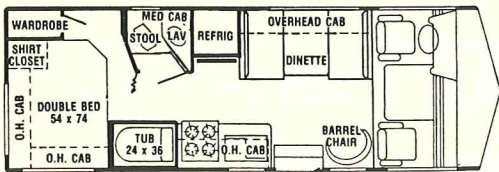
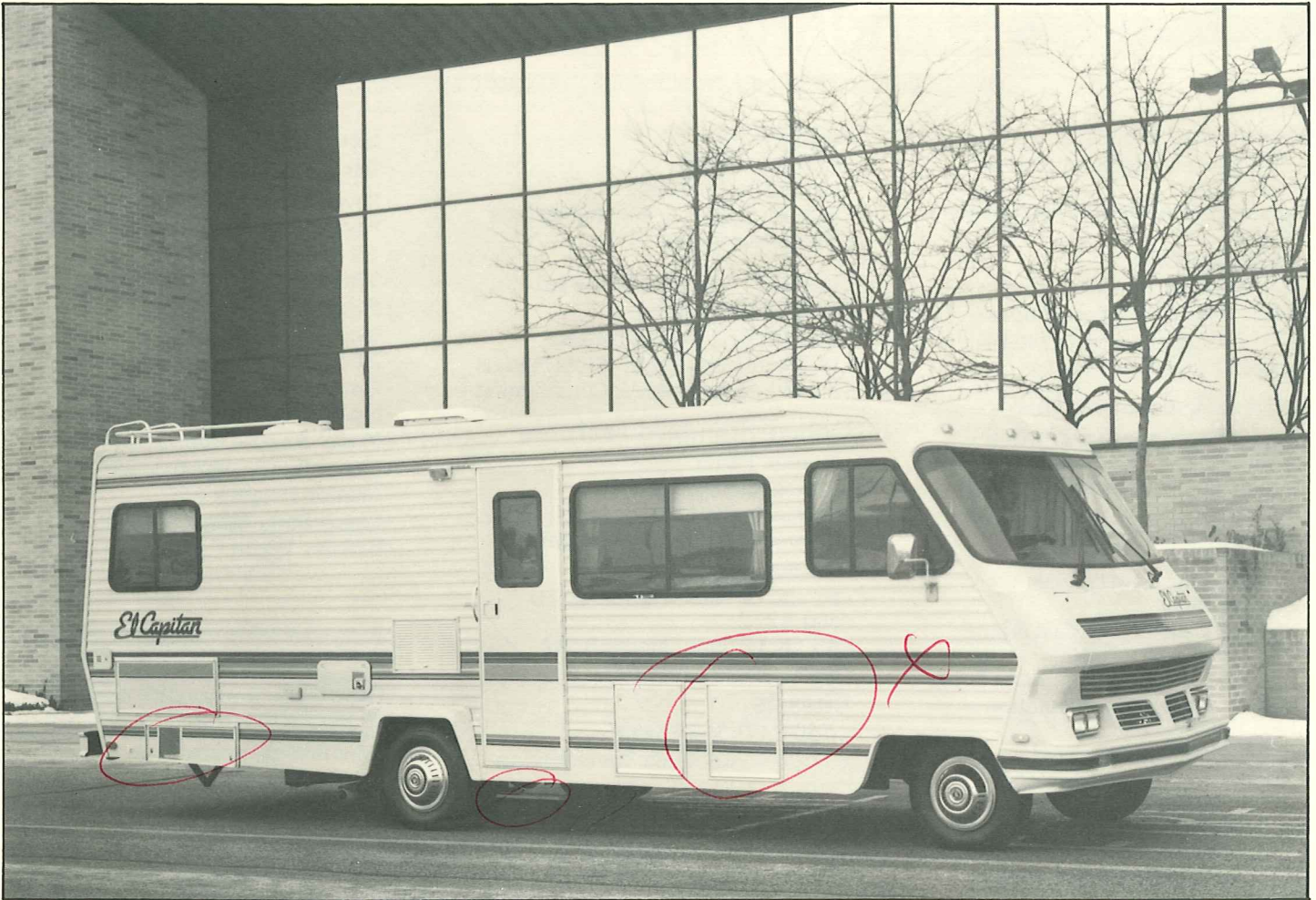


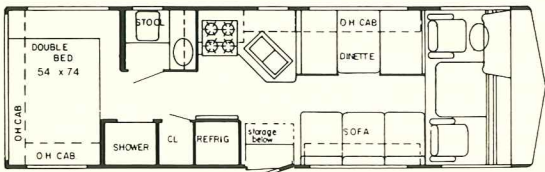
1998

El Capitan

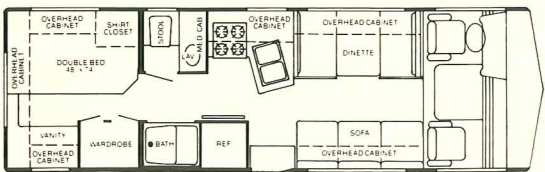
by Gulf Stream Coach



Model 8242-EC (Frt. Opt.: E; Rear Opt.:1)

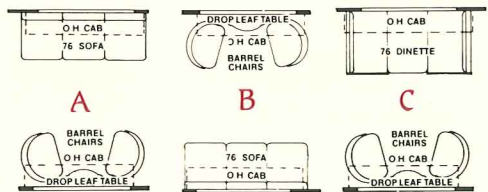


Model 8270-EC (Frt. Opt.: A,C; Rear Opt.:1)

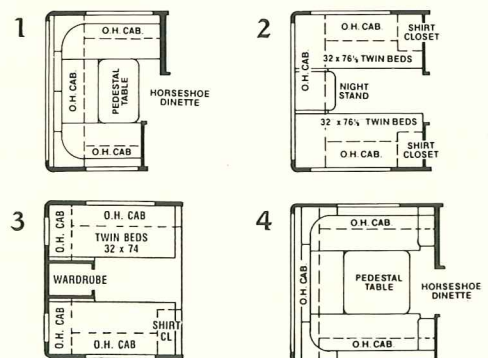


Model 8272-EC (Frt. Opt.: A,B,C; Rear Opt.: 2,3, 4)

Floorplan Options - Front



Floorplan Options - Rear



See reverse side for Standard Specifications

El Capitan

by Gulf Stream Coach

Standard Specifications

The following items are standard on El Capitan models:

Interior and Decor

- Self-Edged and Radius-Cornered Countertops
- Custom Padded Dash W/Illuminated Gauges
- Deluxe Furniture
- Deluxe Carpet
- Deluxe Door & Window Drapes
- Color-Coordinated Pull-Down Blinds
- Generous Overhead Storage

Exterior & Construction

- Tubular Steel Cage Construction - 16 Gauge, 1½" x 1" (Required)
- Tubular Steel Perimeter-Type Floor (Required)
- Laminated Floors W/Metal Underbelly
- Supplemental Steel Chassis Reinforcement
- Outriggers Welded to Main Frame Rails and Bolted to Floor
- One-Piece Seamless Aluminum Roof
- R 5.0 1" Block Foam Insulation in Floor, Walls & Roof
- Fully-Welded Steel Firewall
- Sealed Perimeter and Engine Compartment
- .040" Fiberglass Siding
- Panoramic Windshield
- Tinted Windshield & Windows
- Aerodynamic Exterior
- Color-Coordinated Exterior Graphics
- Generous Exterior Storage
- One-Piece Integrated Front Bumper
- Wrap-Around Rear Bumper

Electrical Systems

- Easy Access Dual Battery System
- 12-Volt, 45-Amp Converter
- Electric Supply Cord
- Electrical Overload Protection
- Generator Compartment
- Automotive-Type Color-Coded Wiring
- Quad Headlight System

Bath and Water

- Dual Holding Tanks
- Fresh Water Tank
- Demand Water System
- City Water Hook-Up
- Double Stainless Steel Sink
- Tub/Shower Combination - Most Models
- Marine Toilet
- Gravity Drains on Fresh Water Lines
- Outside Fresh Water Tank Drain

Appliances

- 4-Burner Range
- Lighted Power Range Hood
- 8 Cu. Ft. 2-Door, 2-Way Refrigerator
- Microwave Ready

Heating, Ventilation and Air Conditioning

- 25,000 BTU Ducted Furnace W/Electronic Ignition - Most Models
- Pre-Wired for Roof Air Conditioning

Deluxe Standard Features

- Monitor Panel
- Emergency Start Switch
- Power Vent in Commode
- Converter W/Battery Charger
- Generator Ready
- 65 Lb. LP Tank—Models 8270 and 8272
- 85 Lb. LP Tank—Model 8242
- Radial Tires and Spare

Chassis

- 460 C.I.D. V-8 Engine
- 3-Speed Automatic Transmission

- Electronic Ignition
- Gasoline Tank - Approx. 40 Gal.
- Power Steering & Brakes
- High Capacity Automotive Heater
- Tilt Steering Wheel
- Wheel Base:
 - Model 8242 - 159"
 - Model 8270 - 159"
 - Model 8272 - 159"
- Exterior Length:
 - Model 8242 - Approx. 24'
 - Model 8270 - Approx. 27'
 - Model 8272 - Approx. 27'
- Interior Height - 6'5"
- Coach Body Height - 9'8"
- Exterior Width - 8'0"

• For further information, contact your local dealer or Gulf Stream Coach, Inc.

Also ask about our Gulf Stream Classic, Gulf Stream Classic Hi-Rise, Sun Stream, Sun Stream Hi-Rise, Sun Vista and Sun Sport Class A motorhomes, Conquest and Ultra Class C motorhomes, Conquest and Monogram vans, Foxfire and Conquest travel trailers and fifth wheels.

 **Gulf Stream Coach, Inc.**

P.O. Box 1005 • Nappanee, Indiana 46550

Gulf Stream Coach, Inc. reserves the right to make changes in prices, colors, materials, components and specifications and to discontinue models at any time without notice or obligation. Gulf Stream

Coach, Inc. assumes no responsibility for any error in type or print reproduction of specifications or floorplans in this brochure.

See reverse side for Floorplans

10M 5/88 DP 61817